

# PRODUCT MANUAL

## GlassTouch Pro 2-Zone Wireless Dimmer Wall Switch 120V AC



Contact Us: 425.582.7533  
www.SolidApollo.com  
Andrew@SolidApollo.com

### Manual Content

- Product Information
- Product Diagram and Parts
- Product Wiring and Installation
- Product Operation
- Product Troubleshooting

### Product Description

Control two zones or areas independently from one switch/location with Solid Apollo's GlassTouch Pro Wireless Dimmer Switch. It is the perfect solution for controlling LED fixtures in multiple areas of your home or business.

This classic low-profile LED Dimmer Switch is designed with only four simple backlit touch controls on a beautiful glossy glass panel. The subtle backlight lets you see and use the dimmer even in a dark room and the smooth glass panel makes cleaning the surface effortless. Zones can easily be assigned and controlled. The Dimmer can also be paired with an unlimited number of Dimming-Receivers (one included).

The two zone GlassTouch Pro Dimmer perfectly installs in any single gang box unit that has a live and neutral wire (required for operation) and can be directly connected to the 120V AC power line inside the gang box.



### Product Features

- 1 x GlassTouch Pro 2-Zone Wireless Dimmer
- 1 x 8A Dimming-Receiver
- Perfectly installs in any single standard gang box
- Connects directly to any standard 120V AC line
- Controls single-color LED fixtures
- Control up to two zones independently
- Pairs to unlimited number of dimming-receivers
- Full dimming from 100% – 1%
- Impressive 65 feet wireless range
- Soft ramping On/Off technology
- Easy installation and operation
- Subtle back light for operation in dark area
- Memory Function - Remembers last setting before losing power.

### Product Specs

#### *GlassTouch Pro Dimmer*

- Dimming : 100% to 1%
- Input Voltage : 100V - 240V AC
- Control Zones : 2
- Weight : 0.40 lb
- Control System : Radio Frequency
- Frequency : 916.5 MHz
- Range : 65ft
- Dimension : 4.7" x 3.0" x 1.2"

#### *Dimming-Receiver*

- Input Voltage : 12V - 36V DC
- Max Power : 96W@12V DC  
288W@36V DC
- Max Amps : 1 x 8A
- Dimensions : 3.7" x 1.5" x 0.8"
- Weight : 0.15 lb
- IP Rating : IP20
- Working Temp : - 40F - 120F
- Warranty : 3 Years
- Certificates : CE, RoHS

# PRODUCT MANUAL

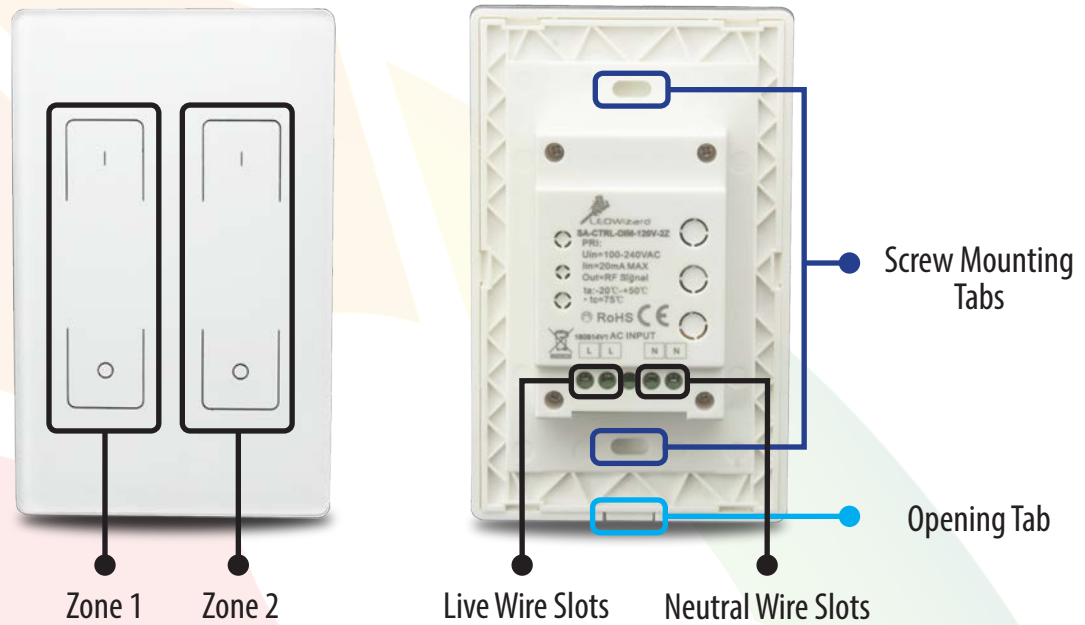
## GlassTouch Pro 2-Zone Wireless Dimmer Wall Switch 120V AC



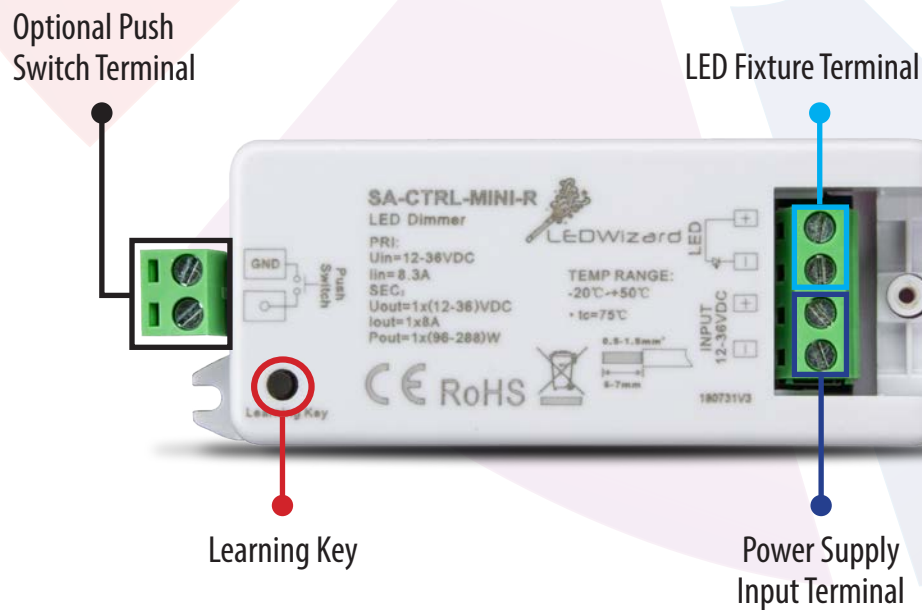
Contact Us: 425.582.7533  
www.SolidApollo.com  
Andrew@SolidApollo.com

### Product Diagram and Parts

#### Dimmer



#### Dimming-Receiver



# PRODUCT MANUAL

## GlassTouch Pro 2-Zone Wireless Dimmer Wall Switch 120V AC



Contact Us: 425.582.7533  
www.SolidApollo.com  
Andrew@SolidApollo.com

### Product Wiring and Installation

#### Wiring of Dimming-Receiver

The tools required for the installation are Philips head screwdriver, slot head screwdriver and wire strippers.

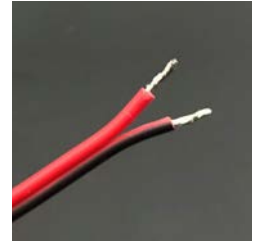
##### Step 1:

Unscrew and remove the white plastic endcap to expose the green wiring terminal blocks.



##### Step 2:

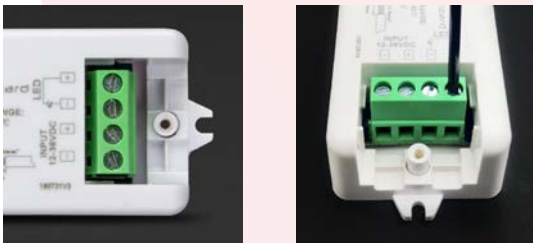
To add power, strip off about ¼-inch of the plastic jacket from the ends of the power supply wires to expose the metal strands. Twist each wire to bind the strands together for a better installation.



**Please Note:** Make sure that the power supply is NOT connected to a power source.

##### Step 3:

Open the green terminal-block slots located below the screw, by partially unscrewing the screws on the top.



##### Step 4:

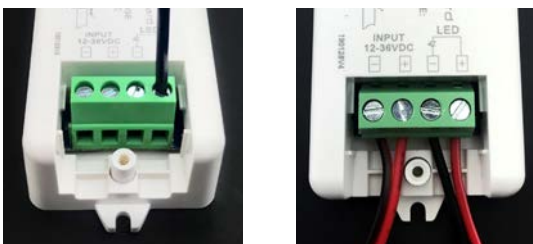
Securely install the stripped Power Supply wires into the opened "INPUT" side of the terminal-block by tightening back the screw. The Red wire should be connected to the "+" slot of the "INPUT" and the Black wire connected to the "-" slot.



##### Step 5:

Strip off ¼" of the wires from the LED fixture and connect them to the "LED" side of the terminal-block by similarly following steps 2. and 3.

Lightly pull the wires to test and make sure that they are strongly connected. Place back the end cap removed in step 1. Wiring is complete and you can now power up.



##### Step 6:

**Optional:** You can connect a Spring-Loaded Rocker Switch to the Dimming-Receiver to control your LED fixtures with it (on/off and dimming functions). To do this, connect the Spring-Loaded Rocker Switch to the green "Push Switch" terminal-block with the positive wire from the switch connected to the "+" of the "Push Switch" terminal-block, and the negative wire from the switch connected to the "GND" slots.



# PRODUCT MANUAL

## GlassTouch Pro 2-Zone Wireless Dimmer Wall Switch 120V AC



Contact Us: 425.582.7533  
www.SolidApollo.com  
Andrew@SolidApollo.com

### Product Wiring and Installation

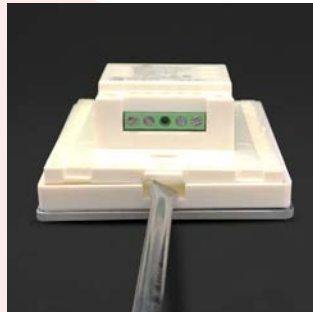
#### Wiring & Installation of GlassTouch Dimmer

Once the wiring of the Dimming-Receiver to a Power Supply and LED Fixture is complete, the only remaining thing is to install the GlassTouch Dimmer and pair it to the Dimming-Receiver.

##### 1. Preparation to install the GlassTouch dimmer:

- i. Identify the installation location (an available single gang box) for the GlassTouch dimmer.  
**Note: MUST be a single gang box unit with Live and Neutral wires inside.**
- ii. Make sure power to the gang box is shut off from the Circuit Breaker.
- iii. Remove any existing switch in the gang box and bring out the wires for wiring to the GlassTouch.
- iv. Separate the faceplate of the GlassTouch dimmer from the backplate by pushing a slot-head screwdriver into the opening tab (see picture **A**) and then gently twisting the screwdriver.
- v. Put the faceplate aside and take the backplate for connecting the wires in the gang box.

**A.**



##### 2. Wiring the GlassTouch dimmer:

- i. Open the Screw Terminals by partially unscrewing the screws in each L and N terminal.
- ii. Firmly install the Live wire(s) (Black) to the "L" terminals and tighten the screws, and install the Neutral wire(s) (White) to the "N" terminals and tighten the screws (see picture **B**).
- iii. Lightly pull the wires to test and make sure that they are strongly connected.

**B.**



### Product Wiring and Installation (continued)

#### 3. Mounting the GlassTouch Dimmer:

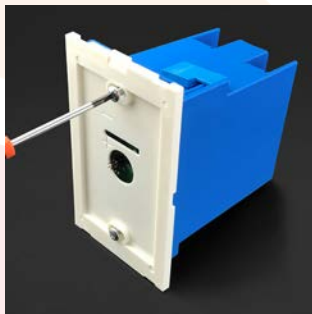
- i. Once wiring is complete, push the wires back into the gang box and mount the backplate to the gang box using the provided screws (see picture C).

**Note:** Ensure that the **opening tab** is located on the **bottom side**.

- ii. Install the faceplate back onto the mounted backplate. Make sure that it properly clicks in place.

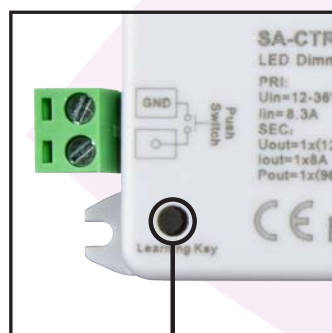
**Note:** Ensure that the **connecting pins** at the middle of the backplate are **not bent** and that they are properly inserted into their slots on the faceplate.

C.



#### Pairing the GlassTouch Dimmer to the Dimming-Receiver

- i. Push the "Learning Key" button on the Dimming-Receiver.
- ii. Push and hold the "I" button on the GlassTouch Dimmer for the zone that you desire to pair the dimming-receiver. The lights would flash and brighten up once pairing is successful.

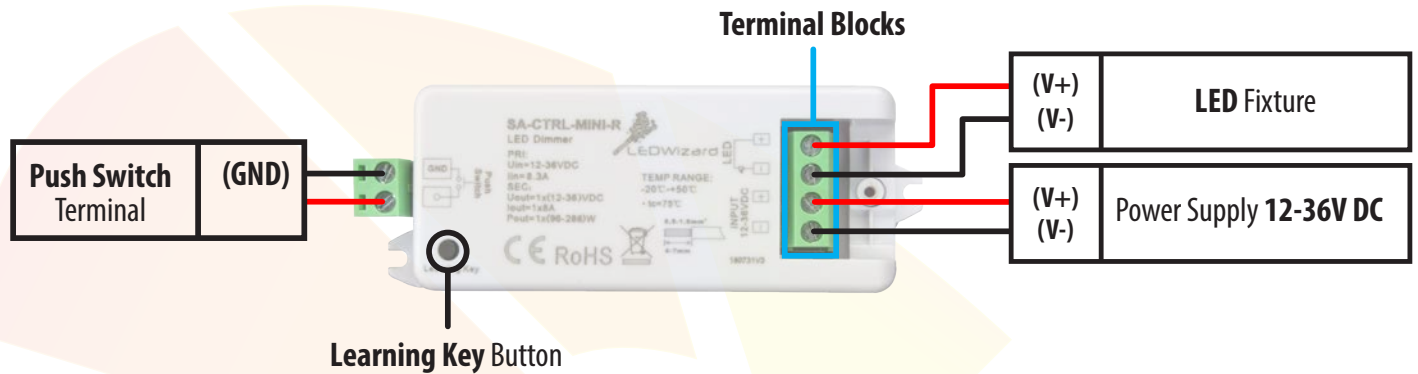


Learning Key Button



"I" Button

### Wiring Diagram



### Product Operation

#### Buttons and Functions

- "I" = Button for turning **ON** and also **brightening up** LED Fixtures.
- "O" = Button for turning **OFF** and also **dimming** LED Fixtures.

#### Turning On/Off LED Fixtures

- Simple push of "I" button pads will turn on the LED Fixtures in that zone.
- Simple push of "O" button pads will turn off the LED Fixtures in that zone.

#### Brightening/Dimming LED Fixtures

- Push and hold of "I" button pads will **brighten up** the LED Fixtures in the corresponding zone.
- Push and hold of "O" button pads will **dim down** the LED Fixtures in the corresponding zone.



# PRODUCT MANUAL

## GlassTouch Pro 2-Zone Wireless Dimmer Wall Switch 120V AC



Contact Us: 425.582.7533  
www.SolidApollo.com  
Andrew@SolidApollo.com

### Product Troubleshooting

This section will show you how to troubleshoot the GlassTouch Pro 2-Zone Wireless Dimmer Wall Switch.

1. **Dimmer backlights not on after installation:** If the dimmer back lights are not on after installation, check to make sure that the wiring is properly done with the Live wires connected to the “L” and Neutral wires connected to the “N”. See *Wiring & Installation of GlassTouch Dimmer (Pg.4)* section.
2. **Dimmer is working but lights not responding:** If the backlights on the GlassTouch dimmer are on and tend to brighten up in response to buttons being pressed that means it (the dimmer) is working, however, if the LED fixture is not responding accordingly then there must be pairing issues between the dimmer and dimming-receiver or issues with wiring the LED fixture to the dimming-receiver. Here is how to identify and fix the problem(s):
  - a. **Dimming-Receiver not powered correctly:** Check to see that the wires from the Power Supply are properly wired/connected to the “input” side of the dimming-receiver’s terminal block with red connected to the “+” and black connected to the “-”. Ensure that there is strong contact between the wires and terminals.
  - b. **LED fixture’s cables not connected correctly:** Check to make sure that the LED fixture’s wires are correctly connected to the “LED” side of the dimming-receiver’s terminal block with red connected to the “+” and black connected to the “-”. Ensure that there is strong contact between the wires and terminals.
  - c. **Dimming-Receiver not paired:** Make sure that the dimmer and dimming-receiver are paired for the system to work. See Pairing the GlassTouch Dimmer to the Dimming-Receiver section above.
  - d. **Dimming-Receiver not properly paired:** First, unpair/reset the system by pressing and holding the “Learning Key” on the dimming-receiver for a few seconds until the lights flash. Then re-pair again by following the Pairing the *GlassTouch Dimmer to the Dimming-Receiver instructions (Pg.5)*.
  - e. **Signal from GlassTouch Dimmer not getting to Dimming-Receiver:** Ensure that the dimming-receiver is within 65 feet range from the dimmer and not fully enclosed in a metal box.
  - f. **GlassTouch Dimmer and Dimming-Receiver paired but lights not responding:** If the lights flash during the pairing process to indicate successful pairing but do not respond thereafter, it may be due to the lights being completely dim by factory default. Therefore, press the “Learning Key” button on the dimming-receiver once, and then press and hold the brightening up button on the dimmer until the lights brighten fully. The lights should work perfectly after that.