

# PRODUCT MANUAL

## iChroma LED Wall Washer



Tel. 425.582.7533  
Toll Free. 866-592-3873  
www.SolidApollo.com  
sales@SolidApollo.com

WALL WASHER Manual

### DESCRIPTION

#### FIG. 1 FLOOD WALL WASHER

Solid Apollo's ETL Listed iChroma Flood LED Wall Washer is the perfect solution for flooding with rich color light a wide range of spaces. Its 36 High Power LED's deliver amazing colors and brightness levels never seen before.

Its patented polycarbonate frosted wide angle output lenses can achieve a very precise color mixing, creating a perfect color projection over a large area without any blemishes or color mismatch.

#### iChroma Flood RGB LED Wall Washers are perfect for:

- Outdoor/Indoor projection of LED light
- Architectural and event LED lighting
- Room or space flood

**FIG. 2 LINER WALL WASHER** is the perfect solution for lighting up walls and surfaces with rich light. Its High Power LED's, deliver amazing colors and brightness levels!

Its patented polycarbonate narrow angle output lenses can generate a very precise color mixing light, creating a perfect color projection over a long distance, without any blemishes or color mismatches.

#### iChroma Liner RGB LED Wall Washers are perfect for:

- Outdoor/Indoor wall washing of LED light
- Architectural and event LED lighting
- Wide surface Lighting

#### FIG. 3 WIDE FLOOD LED WALL WASHER

Solid Apollo's ETL Listed Flood LED Wall Washer is the perfect solution for flooding an area with rich color light in a wide range of spaces. Its 72 High Power LED's deliver amazing colors and brightness levels for all lighting applications, indoor and out.

The polycarbonate frosted output lenses can be interchangeable, giving the option for a narrow beam (15°) or a wide beam (45°). When the narrow angle, 15° lenses are used, the light is projected a long distance in a narrow column. When the wide angle, 45° lenses are used, the light is flooded across a wide area. It has the capability to achieve a very precise color mixing, creating a perfect color projection without any blemishes or color mismatch.

#### Flood LED Wall Washers are perfect for:

- Outdoor/Indoor projection of LED light
- Architectural and event LED lighting
- Room or space flood

iChroma LED Wall Flood Washer<sup>1</sup>, Linear Washer<sup>2</sup>, Interchangeable Lens Wall Washer<sup>3</sup>



FIG. 1  
Flood Wall Washer  
SKU#SA-LWW-RGB-40W



FIG. 2  
Linear Wall Washer  
SKU# SA-LWW-RGB-18W-LINER (PICTURED)  
SKU# SA-LWW-RGB-36W-LINER (NOT PICTURED)

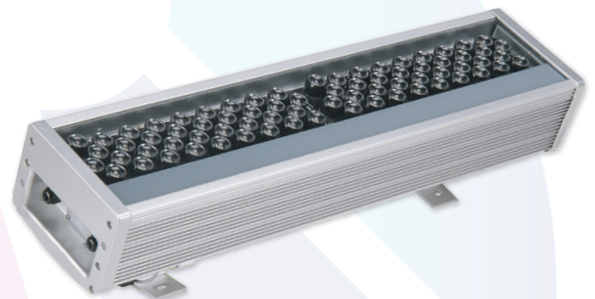
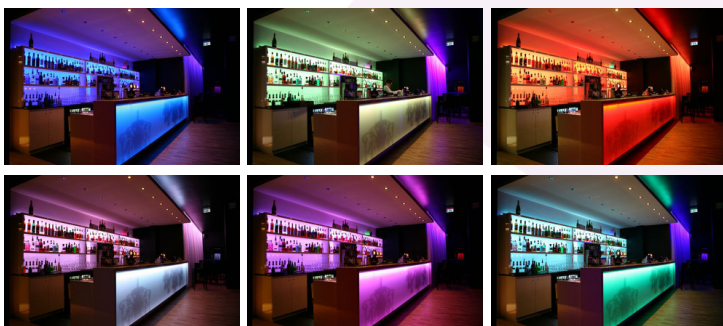


FIG. 3  
Flood Wall Washer  
w/Interchangeable Lenses  
SA-FWW-RGB-72W



# PRODUCT MANUAL

## iChroma LED Wall Washer

### INSTRUCTIONS (for all Solid Apollo LED WALL WASHER)

**NOTE:** The purpose of this user guide is to explain the necessary steps for use of iChroma Wall Washers, and to assure peak performance of said product. It is intended for use as reference by a fully qualified electrician or technician. This document should never be considered a substitute for any provision of a regulation or state and/or local code. Please read this entire manual to fully understand and safely use this product. Specifications are subject to change without notice.

#### GETTING STARTED

**This guide contains important information about installing and operating your new iChroma Wall Washer safely and accurately.**

**CAUTION:** 1) Risk of electric shock. Ensure that the power supply is off when wiring or soldering the sections of the device. 2) The device should be installed and operated by a qualified electrician or technician in accordance with relevant local codes. 3) Do not use sharp tools near or on the surface of the device

#### USER RESPONSIBILITIES

The responsibility of complying with all state and local laws, ordinances, and regulations in regards to the installation, maintenance, and operation of the device lies with the buyer and handler of the device. These parties may include, but are not limited to the contractor, installer, purchaser, owner, and user of the product.

#### PLANNING THE INSTALLATION

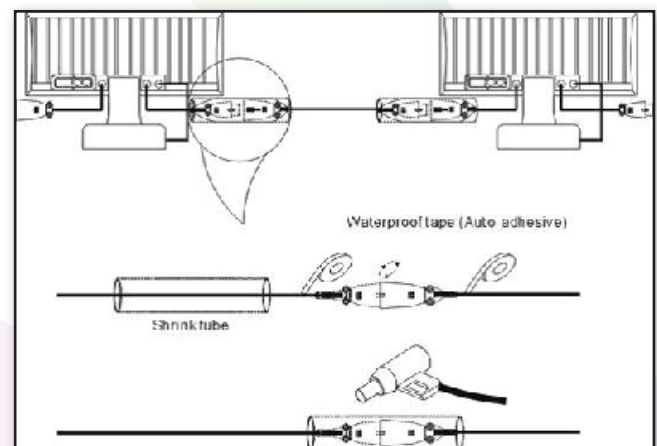
This device installation requires planning to ensure timely installation with minimal complications and down time. Planning Suggestions Consult an Electrical Inspector to review all wiring plans. Create a Layout Plan drawing, per a Lighting Designer's or Architect's recommendation.






#### Installation Considerations:

When creating your installation plan, consider the following: 1) Location of the device: iChroma Flood is suitable for only dry, wet and damp environment. 2) Control System: iChroma Wall Washer can be controlled by RGB DMX Controller. Synchronous color changing might be considered before installing. 3) Lighting Distance: The maximum lighting distance for iChroma Flood is around 20 meters (65 feet). 4) Maximum Series-wound Length 100 meter (328 feet). A Signal Amplifier is needed between every 100 meter (328 feet) distance.

#### Installation Steps

- 1) Place iChroma Wall Washer at planned location and direct it to architecture surface.
- 2) Adjust the rotary angle to requested angle.
- 3) Connect iChroma Wall Washer to each other; Signal Amplifiers are needed to connect between every 100 meters or 328 feet.
- 4) Complete waterproof treatment at every joint of signal connectors. (Please refer to picture RIGHT)
- 5) You can either use an external DMX controller or use the internal autoprogram function which is described on Page 3, Section (2) of this manual.
- 6) Plug the first iChroma Wall Washer and optional DMX console into power outlet to light up the whole system.



Button	Control Mode	Function	Example
	DMX-Control	Display the DMX address selected (valid DMX address from 001~512)	
	Self-Control	Display the color changing mode and speed selected (P=self-control, X=mode, Y=speed)	
	DMX-Control	Select a parameter to set	-
	Self-Control	Select mode/speed to set	-
	DMX-Control	Set corresponding parameter	-
	Self-Control	Set corresponding mode/speed	-



## INSTRUCTIONS (for all Solid Apollo LED WALL WASHER)

### (1) HOW TO ACCESS AND SET UNDER DMX-CONTROL MODE

- Once the wall washer is connected to DMX console, it will access DMX-Control mode.
- Press button "A" (on unit) to select a parameter to set the DMX address.
- Press button "B" (on unit) to set the DMX address.
- Valid DMX address range: 001~512. (You need refer to the user guide of the DMX Console for more operation information.)
- Each wall washer occupies three DMX channels including red, green and blue. For example, the wall washer at DMX address 001 occupies the channel 1, 2 and 3; the wall washer at DMX address 256 occupies the channel 256, 257 and 258.

### (2) HOW TO ACCESS AND SET UNDER SELF-CONTROL MODE

- Press button "A" four times, it will access Self-Control mode and shows "PXY".
- Press button "A" once, certain digital LED starts to flash and access corresponding setup (mode).
- Press button "B" to set the corresponding setup (speed or brightness). The digital LED increase one bit once (values 1~9)
- Master/Slave Mode:
  - choose one wall washer as the master and set the DMX address as 001
  - choose other wall washers as slaves and set the DMX addresses as any address except 001
  - press button "A" of the master wall washer four times, access Self-Control mode
  - change the mode of the master wall washer, and then all slave wall washers will work synchronously

#### e. Parameter form of "PXY"

P	X (MODE)	Y (SPEED/BRIGHTNESS)
-	1 (Static Red)	9 brightness levels, (brightest when setting 9)
-	2 (Static Green)	9 brightness levels, (brightest when setting 9)
-	3 (Static Yellow)	9 brightness levels, (brightest when setting 9)
-	4 (Static Blue)	9 brightness levels, (brightest when setting 9)
-	5 (Static Pink)	9 brightness levels, (brightest when setting 9)
-	6 (Static Cyan)	9 brightness levels, (brightest when setting 9)
-	7 (Static White)	9 brightness levels, (brightest when setting 9)
-	8 (Multi-color jumping)	9 speed levels, (fastest when setting 9)
-	9 (Multi-color fading)	9 speed levels, (fastest when setting 9)
-	A (Multi-color flashing)	9 speed levels, (fastest when setting 9)

### (3) How to exit from selected mode?

**After pressing certain button, please wait for around 10 seconds, it will exit from selected mode. The digital LED stops flashing and the wall washer will memorize the selected mode and parameter.**

### LED SOURCE LIFE

Traditionally, the definition of life for light sources is defined at the point which 50% of the lamps fail under specified conditions. However, all necessary components in a LED lighting system will determine useful life time. According to the industry standard, SolidApollo uses the concept of useful light output and rates product life time at standard of "less than 50% lumen maintenance of original light output". LED exhibits very long operational life time, typically 50,000 hours or more. However, like all light source, LED light output can degrade and also undergo gradual shifts in color over time. LED chips, performed lighting effects and working environmental conditions, such as temperature, humidity, and ventilation will affect LED lumen maintenance. The overall LED Lighting System life time could vary substantially based on usage and environmental condition. SolidApollo always adopts brand chips and high quality materials and components to make LED Lighting Systems.

### QUALITY WARRANTY

This product is sold pursuant to SolidApollo's Standard Terms and Conditions which can be found at <http://www.solidapollo.com/returns-amp-warranty.html> and which contain important provisions, including, among others, the Quality Warranty, exclusions and limitations on SolidApollo's liability for damages, and restrictions on available remedial actions.

**FOR ANY AFTER-SALES ASSISTANCE, PLEASE CONTACT OUR CUSTOMER SERVICE TEAM AT [INFO@SOLIDAPOLLO.COM](mailto:INFO@SOLIDAPOLLO.COM). ALL YOUR CONCERNS AND REQUESTS WILL BE HANDLED WITHIN 12 HOURS.**