

### Manual Content

- Product Information
- Product Parts
- Product Wiring and Installation
- Product Operation
- Product Troubleshooting

### Product Description

Solid Apollo's Magro Wireless Wall Dimmer Switch is a powerful low-profile dimmer that gives you full control of your LED Fixtures either in your hand as a remote or by directly mounting it on any standard US Gang box.

Installation is basically effortless. You just have to screw the unit to any free gang box and it's ready to work. Thanks to its included 3V DC durable battery, there is no messy cable connections.

The Magro Wireless Dimmer Switch lets you use it in two different exciting ways: as a hand-held remote or as a wall dimmer switch. The unit has a magnetically attached button-block that can be removed and carried as a hand-held remote or docked and used as a wall dimmer unit.



### Product Features

- 1 x Magro Wireless Wall Dimmer Switch
- 1 x White Wall-Plate
- 1 x 8A Dimming-Receiver
- Perfectly installs in any standard gang box
- Designed for single-color LED Fixtures
- Pairs to variety of Solid Apollo's Dimmers
- Can be docked or used as hand-held remote
- Full dimming from 100% - 1%
- Impressive 65ft wireless range
- Battery operated (3V DC - CR025)
- Soft ramping ON/OFF technology
- Easy installation and operation
- Saving button to save a scene setting
- Memory function - Remember last setting before losing power.

### Product Specs

#### Magro Dimmer

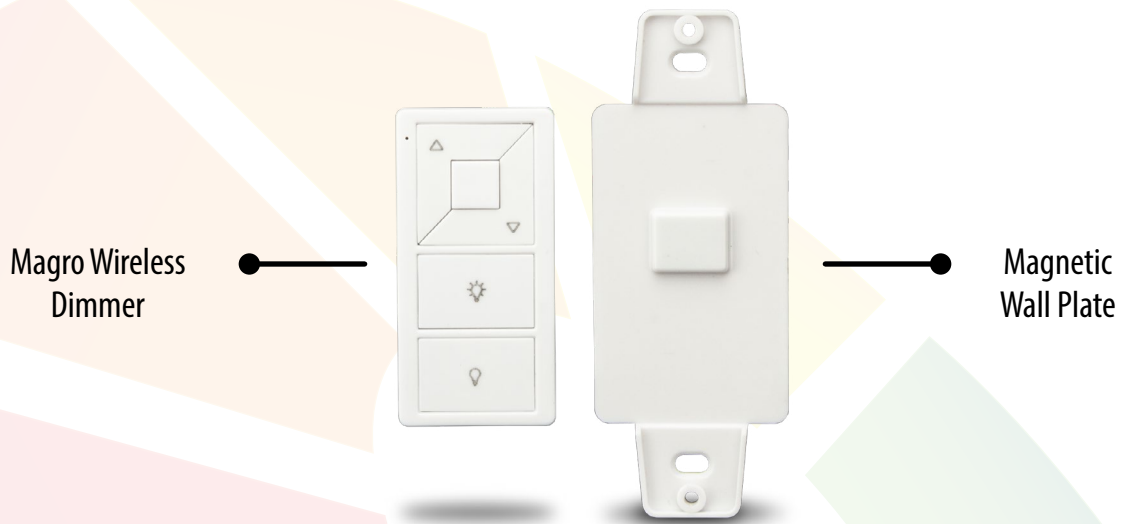
- Dimming : 100% to 1%
- Input Voltage : 3V DC Battery
- Battery Type : CR2025 (included)
- Weight : 0.12 lb
- Control System : Radio Frequency
- Frequency : 916.5 MHz
- Range : 65ft
- Dimension : 2.6" x 1.2" x 0.37"

#### Dimming-Receiver

- Input Voltage : 12V - 36V DC
- Max Power : 96W@12V DC  
288W@36V DC
- Max Amps : 1 x 8A
- Dimensions : 3.7" x 1.5" x 0.8"
- Weight : 0.15 lb
- IP Rating : IP20
- Working Temp : - 40F - 120F
- Warranty : 3 Years
- Certificates : CE, RoHS

### Product Diagram and Parts

#### Dimmer



#### Dimming-Receiver

Optional Push Switch Terminal

LED Fixture Terminal



Learning Key

Power Supply Input Terminal

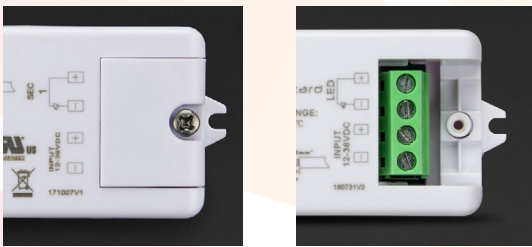
### Product Wiring and Installation

#### Wiring of Dimming-Receiver

The tools required for the installation are Philips head screwdriver, slot head screwdriver and wire strippers.

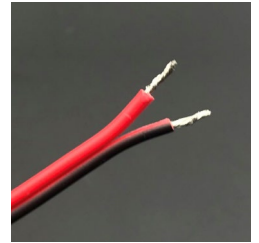
##### Step 1:

Unscrew and remove the white plastic endcap to expose the green wiring terminal blocks.



##### Step 2:

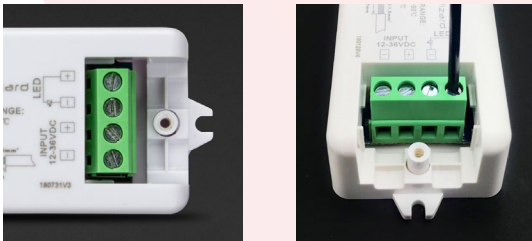
To add power, strip off about ¼-inch of the plastic jacket from the ends of the power supply wires to expose the metal strands. Twist each wire to bind the strands together for a better installation.



**Please Note:** Make sure that the power supply is NOT connected to a power source.

##### Step 3:

Open the green terminal-block slots located below the screw, by partially unscrewing the screws on the top.



##### Step 4:

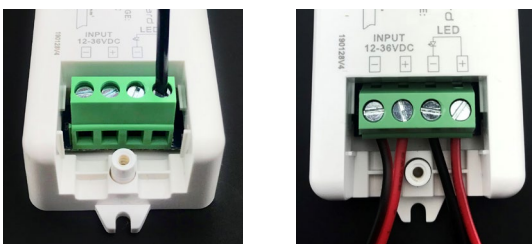
Securely install the stripped Power Supply wires into the opened "INPUT" side of the terminal-block by tightening back the screw. The Red wire should be connected to the "+" slot of the "INPUT" and the Black wire connected to the "-" slot.



##### Step 5:

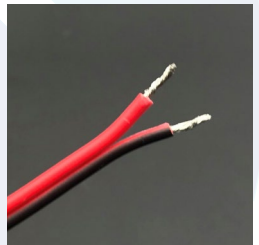
Strip off ¼" of the wires from the LED fixture and connect them to the "LED" side of the terminal-block by similarly following steps 2. and 3.

Lightly pull the wires to test and make sure that they are strongly connected. Place back the end cap removed in step 1. Wiring is complete and you can now power up.



##### Step 6:

**Optional:** You can connect a Spring-Loaded Rocker Switch to the Dimming-Receiver to control your LED fixtures with it (on/off and dimming functions). To do this, connect the Spring-Loaded Rocker Switch to the green "Push Switch" terminal-block with the positive wire from the switch connected to the "+" of the "Push Switch" terminal-block, and the negative wire from the switch connected to the "GND" slots.



### Product Wiring and Installation

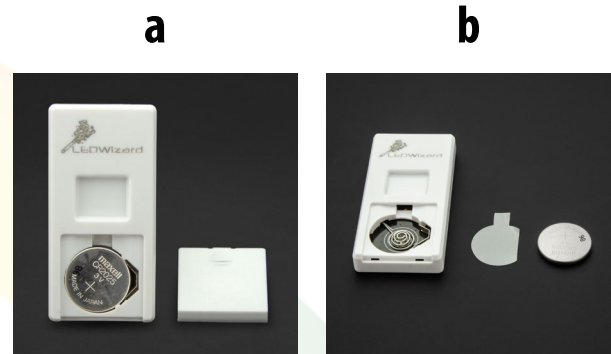
#### Installation & Pairing of the Magro Dimmer

Once the wiring of the Dimming-Receiver to a Power Supply and LED Fixture is complete, the only remaining thing is to install the Magro and pair it to the Dimming-Receiver.

##### 1. Preparation for mounting the Magro:

- Detach the Magro Wireless Dimmer from the Magnetic Wallplate and open the battery compartment at the back.
- Remove the battery and take out the plastic piece under it.
- Return the battery into its compartment (in the same position as it was) and place the cover.

**Please Note:** The small blue indicator LED on the top left corner should blink if any button is pressed.



##### 2. Mounting the Dimmer to a Wall Gang Box:

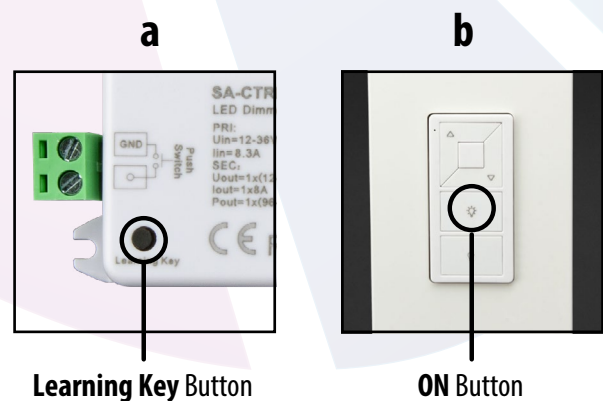
- Install the Magnetic Wall-plate on any available gang box using the screws provided (it can also be installed on any flat surface).
- Install the faceplate on the secured Magnetic Wallplate and insert the Magro Wireless Dimmer.



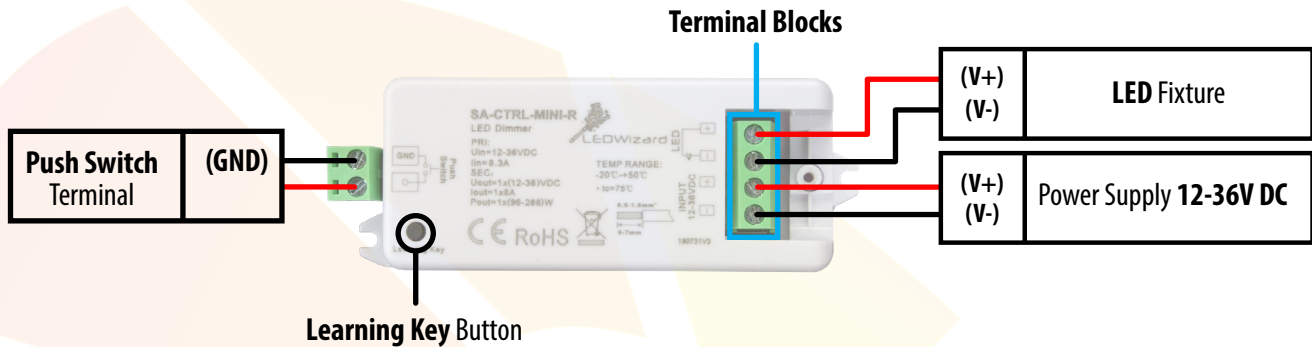
##### 3. Pairing the Dimmer to the Dimming-Receiver:

- On the Dimming-Receiver, push the "Learning Key" button once.
- On the Magro Wireless Dimmer, push the ON button once (depicted by a powered bulb icon).

The lights will flash and brighten up once pairing is successful.



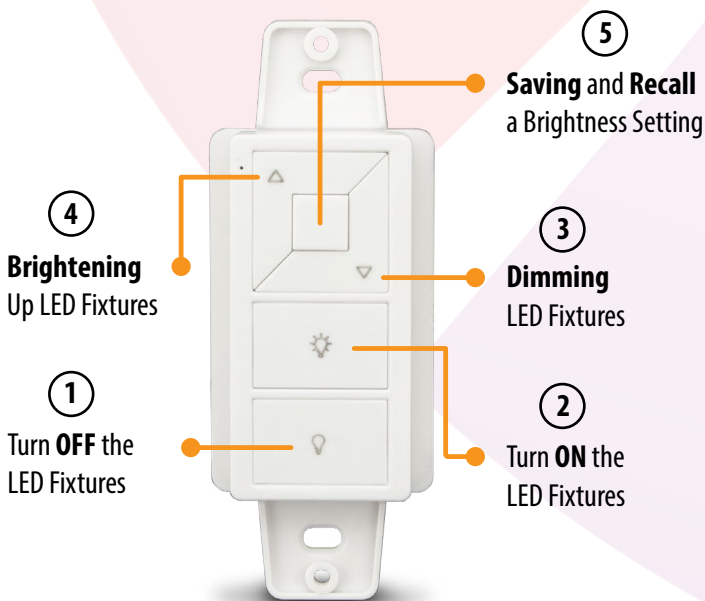
### Wiring Diagram



### Product Operation

#### Buttons and Functions

See diagram for corresponding button numbers.



#### Operations

- Simple push of **Button 1** will **turn OFF** the LED Fixtures
- Simple push of **Button 2** will **turn ON** the LED Fixtures
- Push and hold of **Button 3** will **dim down** the LED Fixtures
- Push and hold of **Button 4** will **brighten up** the LED Fixtures
- Push and hold of **Button 5** will **save** the existing brightness setting. This is a great feature that lets you save a desired brightness level, for example, you can dim your lights to 25% brightness and save it with this button by pushing and holding it (for 3 seconds) until the lights flash. Once this is done, you can recall that brightness setting anytime without having to manually dim the lights to that setting over and over. You can also replace a saved brightness setting with a different one anytime on the same button by repeating the same process (i.e. dim the lights to the desired brightness and then push and hold Button 5).
- Simple push of **Button 5** will **recall** a saved scene

### Product Troubleshooting

---

This section will show you how to troubleshoot the Magro Wireless Wall Dimmer Switch.

1. **Dimmer not responding when buttons are pressed:** Check to see that the small plastic piece under the battery has been removed. See *Preparation for mounting* in the *Product Wiring & Installation (pg.4)* section.

Make sure that the battery is correctly placed in its compartment with the “+” side at the top and the other side at the bottom and touching the spring at the bottom of compartment.

2. **Dimmer is working but lights not responding:** If the blue LED on the Magro blinks in response to buttons being pressed that means the dimmer is working but if the lights are not responding accordingly then there must be pairing issues. This may be as a result of one of a few reasons:

- a. **Dimming-Receiver not powered correctly:** Check to see that the wires from the Power Supply are properly wired/connected to the “input” side of the Terminal Block of the dimming-receiver with red connected to the “+” and black connected to the “-”.
- b. **LED fixture’s cables not connected correctly:** Check to make sure that the LED fixture’s wires are correctly connected to the “LED” side of the dimming-receiver’s Terminal Block with red connected to the “+” and black connected to the “-”. Ensure that there is strong contact between the wires and terminals.
- c. **Dimming-Receiver not paired:** Make sure that the dimmer and dimming-receiver are paired for the system to work. See *Pairing the dimmer. . .* in the *Preparation for mounting (see Pg.4)*.
- d. **Dimming-Receiver not properly paired:** First, unpair the system by pressing and holding the “Learning Key” on the dimming-receiver for a 10 seconds until the lights flash. Then re-pair again by following the *Pairing the dimmer. . .* instructions in the *Preparation for mounting (see Pg.4)*.
- e. **Signal from Magro (dimmer) not getting to Dimming-Receiver:** Ensure that the dimming-receiver is within 65 feet range from the dimmer and not fully enclosed in a metal box. Also, ensure that the batteries are not dead.
- f. **Magro (dimmer) and Dimming-Receiver paired but lights not responding:** If the lights flash during the pairing process to indicate successful pairing but do not respond thereafter, it may be because the lights are dimmed completely. Therefore, press the “Learning Key” on the dimming-receiver once, and then press and hold the brightening or dimming button (button 3 or 4 - see pg. 5) on the dimmer until the lights brighten fully. The lights should work perfectly after that.