

PRODUCT MANUAL

Duet 3 Zone DMX & Wireless RGB-W Controller



Toll Free: 866.592.3873
Email: sales@solidapollo.com
www.SolidApollo.com

Product Description

The Duet 3 Zone LED Controller has been created to bring even more functionality to the already incredible Duet Controller. Enjoy controlling up to 3 separate lighting zones either independently or simultaneously. The Duet 3 Zone can easily be used 3 different ways, by connecting directly to DMX enabled fixtures, or wirelessly connecting to non-DMX LED fixtures operating in RGB-W mode, or use both DMX and non-DMX wireless modes at the same time.

The Duet 3 Zone LED Controller is perfect for DMX enabled LED Lights, such as LED Wall Washers and LED Flood Lights. With the wireless option connecting to non DMX LED fixtures such as LED Strip Lights and LED Light Bars is easy to do, as there is a 50 foot wireless range. To connect using the wireless feature a matching receiver is required for each lighting zone (LED Wizard WiFi LED Receiver, SKU: WIFI-RECEIVER). The wireless option makes installation easier than ever, as no extra wiring is required saving time and energy.

Main Functions:

- 3 Zone Control
- 3 in 1 Controller: DMX Control, Wireless RGB-W, or both
- Amazing Color Options and Full Dimming Control
- Includes 10 Color Changing Programs
- Amazing Color Options and Full Dimming Control
- Touch Sensitive Glass Surface
- Fits Standard US Gang Boxes
- 50 Foot Wireless Range
- Memory Function – Remembers Last Setting Even When the Power Goes Off

This manual reviews:

- Entire installation process
- Product features and primary uses
- Detailed functionality
- Troubleshooting options
- Technical Parameters

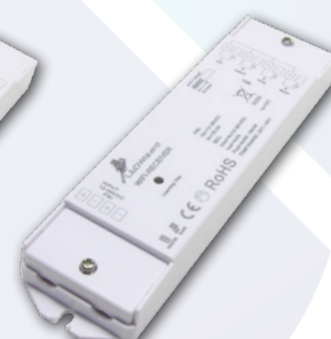


Controller

For Direct DMX Control: No Receiver Needed



For DMX Control of RGB-W Light Fixtures: Use the 4 Channel DMX to RGB-W LED Receiver
Part# SA-CTRL-001-V2



For Wireless RGB-W Control: Use the LED Wizard WIFI LED Receiver
Part# WIFI-RECEIVER

Optional Receivers

PRODUCT MANUAL

Duet 3 Zone DMX & Wireless RGB-W Controller



Toll Free: 866.592.3873
Email: sales@solidapollo.com
www.SolidApollo.com

Installation

The Duet 3 Zone DMX & RGB-W In Wall LED Controller can independently control DMX enabled LED fixtures or non-DMX LED fixtures operating in RGB-W mode, or use both DMX and non-DMX systems simultaneously. The type of LED lighting fixture being used will determine if a receiver is needed, and what type will be needed.

Tools Required:

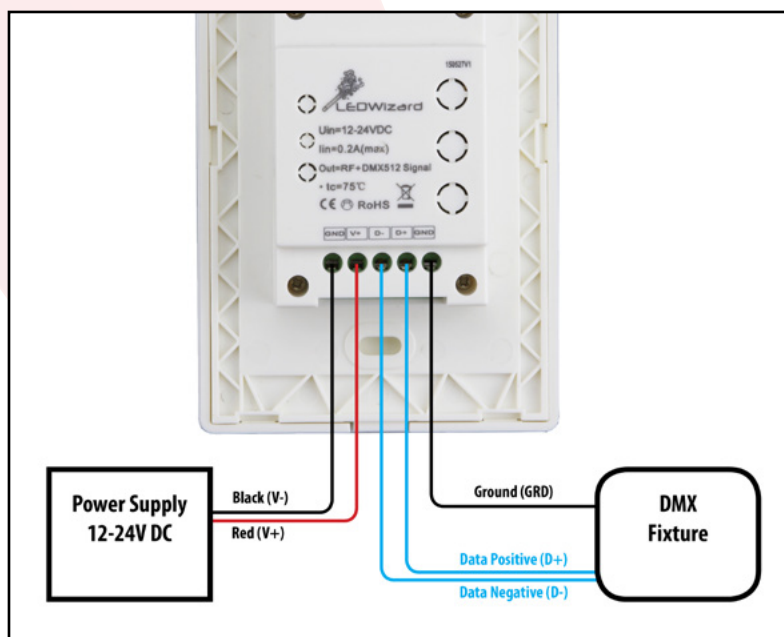
Philips Screwdriver
Flat Head Screwdriver
Wire Stripper

Select the correct LED fixture type

- 1) If using DMX compatible LED products (see step A below)
- 2) If using RGB-W (five wire) LED products requiring DMX connections (see step B on page 5)
- 3) If using RGB-W (five wire) LED products using wireless control (see step C on page 6)

A) Using DMX compatible LED products

When using DMX compatible LED products only requiring data connections, no receiver is required and the Duet 3 Zone Controller can be hard wired directly to the DMX LED products.



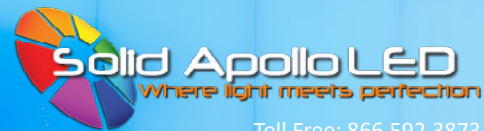
1 First, turn off all power to the installation location to prevent injury or shock. Turn off power or unplug the power at the location's junction box, or consult a certified electrician to appropriately turn of the power.

2 Select a location to place the controller. If no gang box exists, a new gang box and wiring from a power source will be required as the controller uses 12-24V DC power. If an old wall controller is already in place, remove the old wall controller, but leave the gang box in place. Make sure the correct power (12-24V DC) is available for the controller.

...continued on next page

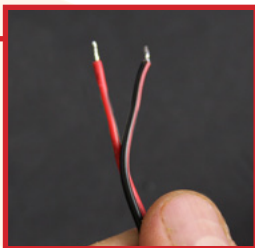
PRODUCT MANUAL

Duet 3 Zone DMX & Wireless RGB-W Controller



Toll Free: 866.592.3873
Email: sales@solidapollo.com
www.SolidApollo.com

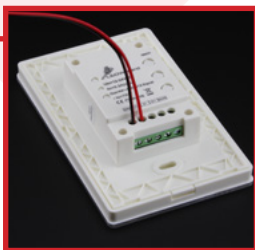
- 3 Unscrew the five wiring box screws located on the back of the controller. Unscrew until the wire doors are completely open (note: screws will not come out). Prepare the two wires from the power source and the three wires from the DMX light fixture by using a set of wire strippers to remove ¼ inch of the plastic covering on the wires. Twist the exposed metal wire ends to help make a secure connection.



- 4 First connect the power source wiring starting with the ground wire (-). Take the wire and insert into the far left wiring slot, under the label "GND" (means ground). Take the Philips Screwdriver and tighten down the far left screw until it becomes tight. Gently pull on the wire to make sure it will not easily pull out.



- 5 Then, take the second power wire, the voltage wire (+), and insert it into the second from the left wiring box, under the label "V+" (means voltage in). Take the Philips Screwdriver and tighten down the second from the far left screw until it becomes tight. Gently pull on the wire to make sure it will not easily pull out.



- 6 Repeat the wiring attachment process for the data wires to the three wiring boxes on the right side, making sure the Data Negative (D-), Data Positive (D+) and Ground (GRD) match their respective wiring boxes.

...continued on next page

PRODUCT MANUAL

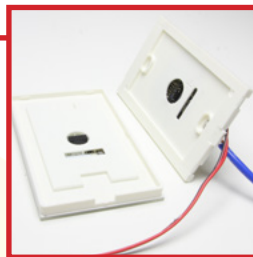
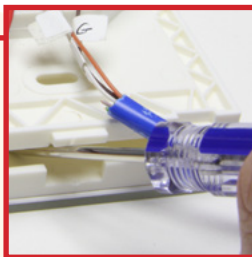
Duet 3 Zone DMX & Wireless RGB-W Controller



Toll Free: 866.592.3873
Email: sales@solidapollo.com
www.SolidApollo.com

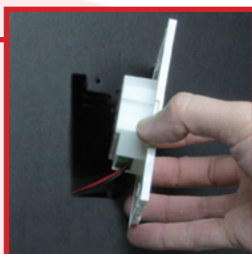
7

To mount the controller, the rear mounting plate must be removed from the front cover. Insert a flat head screwdriver carefully into the center bottom of the controller and gently pry upwards to pull the rear mounting plate off from the front cover. Place the front cover to the side and on a soft surface to prevent damaging the touch surface.



8

Take the Philips Screwdriver and the provided mounting screws to mount the rear mounting cover. First take one screw and insert through the top hole of the rear mounting plate (if unsure which is the top, check the back side of the rear mounting plate for top and bottom orientation, the text should not be upside down). Begin tightening the screw by hand into the top screw receptacle of the gang box.



9

Take the second screw and insert it into the bottom hole of the rear mounting plate and begin tightening the second screw by hand into the bottom screw receptacle. Using the Philips Screwdriver, tighten the top screw until it is snug, and then tighten the bottom screw until it is snug. Both screws should be almost flush with the rear mounting plate.



10

Take the front cover and place back over the rear mounting plate. Note the alignment tab at the bottom center of the front and rear covers. Carefully place the front cover over the rear mounting plate and push on the top and then the bottom until the cover clicks into place. The Duet controller is now ready to interface with the LED light fixtures and the power can be turned back on.



Duet 3 Zone LED Controller



The diagram illustrates the wiring for the LEDWizard DMX to RGB Controller. It shows two 12-24V DC power supplies, a DMX controller unit, and a light fixture. The wiring is as follows:

- Power Supply 1 (Top):** Black (V-) to DMX controller terminal 1, Red (V+) to terminal 2.
- Power Supply 2 (Bottom):** Black (V-) to DMX controller terminal 3, Red (V+) to terminal 4.
- Data Wires:** Blue (Data Positive, D+) to DMX controller terminal 5, Green (Data Negative, D-) to terminal 6.
- Ground:** Ground (GRD) to DMX controller terminal 7.
- Light Fixture:** W- (White) to DMX controller terminal 8, G- (Green) to terminal 9, R- (Red) to terminal 10, B- (Blue) to terminal 11.

The DMX controller unit features a digital display showing '888' and various control buttons: 0-5 Speed, 0-8 Mode, 0-9 Bright, and a 10-75°C temperature range. It also has a RoHS logo and a CE mark.

- Page 5

PRODUCT MANUAL

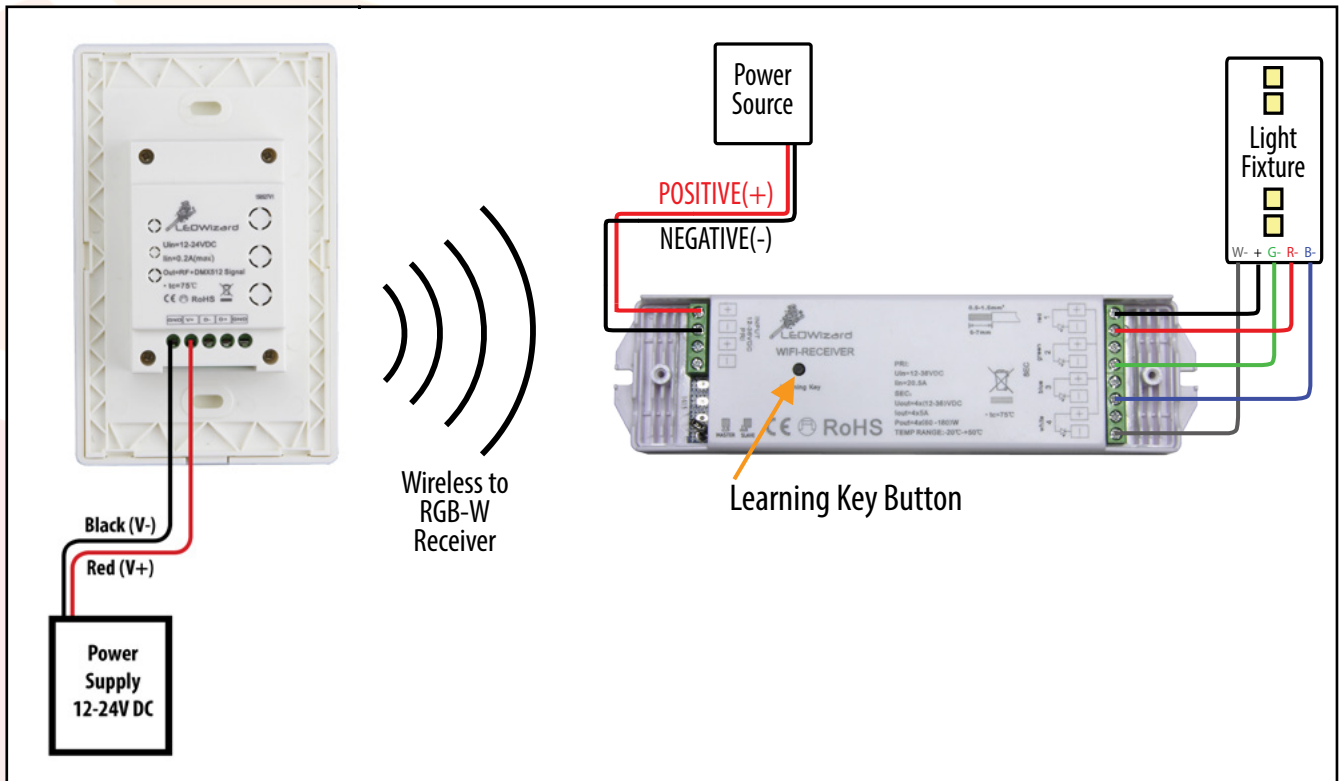
Duet 3 Zone DMX & Wireless RGB-W Controller



Toll Free: 866.592.3873
Email: sales@solidapollo.com
www.SolidApollo.com

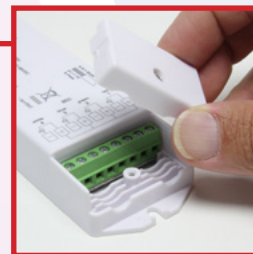
C) Using wireless control for RGB-W (five wire) LED products

When using the wireless mode to connect to LED products, the WIFI receiver is required to control the RGB-W light fixtures



1 First, turn off all power to the installation location to prevent injury or shock. Turn off or unplug the power at the location's junction box, or consult a certified electrician to appropriately turn off the power.

2 Begin by wiring the receiver. First, the wiring door covers need to be removed. Take the Philips Screwdriver and unscrew the left and right wire door screws. Carefully pull the wire doors up and off. A flat head screwdriver may be used to help carefully pry the doors up and off by inserting the screwdriver into the wiring holes on the side of door. Place the two screws and the wire doors to the side.



...continued on next page

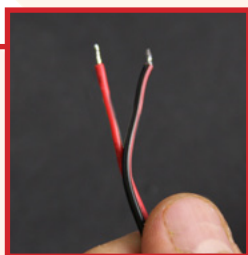
PRODUCT MANUAL

Duet 3 Zone DMX & Wireless RGB-W Controller

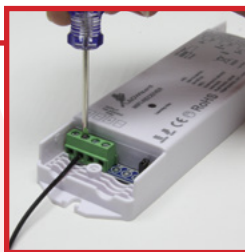


Toll Free: 866.592.3873
Email: sales@solidapollo.com
www.SolidApollo.com

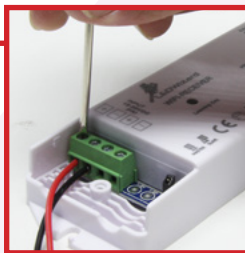
- 3 First, prepare the wires providing power to the receiver. Use a set of wire strippers to remove ¼ inch of the plastic covering on both the positive and negative wires. Twist the exposed metal wire ends to ensure a secure connection. On the two left wire boxes, unscrew the two screws until the boxes are completely open (note the screws will not come out).



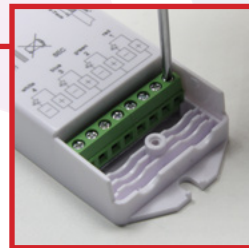
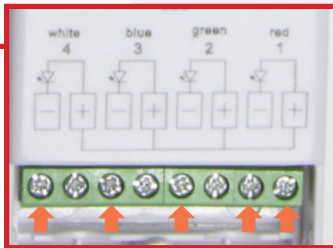
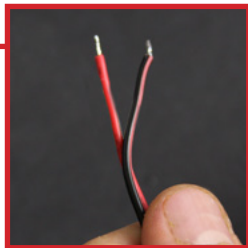
- 4 First connect the wiring starting with the negative ground wire (-). Take the wire and insert into the second from the left wiring slot, under the label "-", until it stops when touching the back of the wire box. Take the Philips Screwdriver and tighten down the screw until it becomes tight. Gently pull on the wire to make sure it will not easily pull out.



- 5 Then, take the second wire, the positive voltage wire (+), and insert it into the left wiring box, under the label "+". Take the Philips Screwdriver and tighten down the second from the far left screw until it becomes tight. Gently pull on the wire to make sure it will not easily pull out. The power wires are now connected.



- 6 Next connect the wires from the light fixture, take the four wires and prepare them using the wire stripper to remove ¼ inch of the plastic covering. Twist the exposed metal wire ends to make a secure connection. Take the Philips Screwdriver and unscrew the five wiring boxes noted in the diagram below (from the left, loosen the 1st, 3rd, 5th, 7th and 8th screws), until the wiring boxes are open (note the screws will not come out).



PRODUCT MANUAL

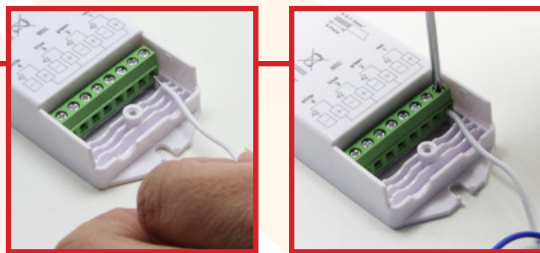
Duet 3 Zone DMX & Wireless RGB-W Controller



Toll Free: 866.592.3873
Email: sales@solidapollo.com
www.SolidApollo.com

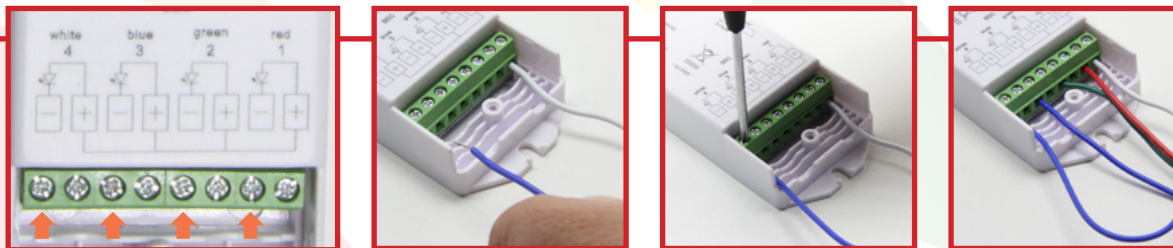
7

First connect the wiring starting with the positive wire (+). Take the wire and insert into the furthest to the right wiring slot, under the label "+," until it stops when touching the back of the wire box. Take the Philips Screwdriver and tighten down the screw until it becomes tight. Gently pull on the wire to make sure it will not easily pull out.



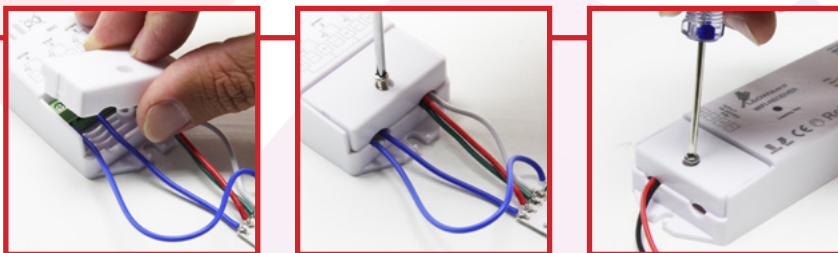
8

Then, repeat the wire connection process for the next four negative wires (red, green, blue and white) and connect them to the wiring slots indicated below.



9

Place the wiring door covers back on each side of the receiver, and using a Philips screwdriver, tighten then down the screws while making sure the wiring comes out one of the side wiring holes (see center picture below). The light fixture is now connected to the receiver.



10

Next, connect and install the Duet 3 Zone Controller. Go to Step A listed on Page 2 and do steps 1 through 10 to complete installation of the Duet 3 Zone Controller.

PRODUCT MANUAL

Duet 3 Zone DMX & Wireless RGB-W Controller



Toll Free: 866.592.3873
Email: sales@solidapollo.com
www.SolidApollo.com

Pairing the Duet 3 Zone Controller

This section will show you how to pair your new Duet 3 Zone Controller with three different light fixture options.

Select the correct LED fixture type

- 1) If using DMX compatible LED products (see step A below)
- 2) If using RGB-W (five wire) LED products requiring DMX connections (see step B below)
- 3) If using RGB-W LED products requiring wireless control (see step C below)

A) Using DMX compatible LED products

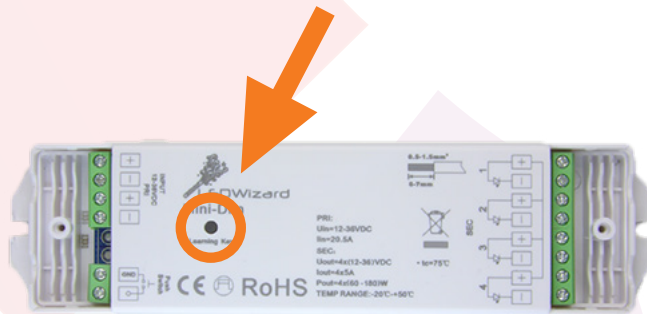
When using DMX compatible LED products only requiring data connections, no receiver is required as the Duet 3 Zone Controller can be hard wired directly to the DMX LED products.

B) Using RGB-W products requiring DMX connections

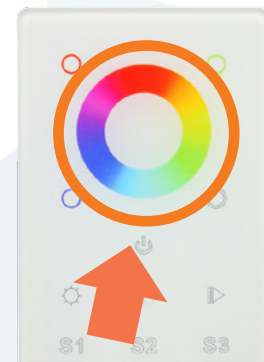
When using DMX compatible LED products requiring RGB-W five wire connections, the 4 Channel DMX to RGB-W Controller is required. Please refer to the user manual titled "4 Channel DMX to RGB-W LED Controller Manual" located on the web site for the 4 channel receiver to correctly pair the controller with the receiver.

C) Using RGB-W products with a wireless connection

When using the wireless mode to connect to LED products with RGB-W connections, the WIFI LED Receiver must be used.



Learning Key Button Location



Color Wheel Location

1

Make sure the LED zone(s) and power supply are turned on and correctly connected. On the receiver, tap the Learning Key button once. On the Duet 3 Zone Controller, push around the color wheel until the lights on the LED fixture(s) flash. The flash indicates the receiver and the dimmer are paired. This should happen within the first five seconds. The Duet 3 Zone Controller is now ready to work.



PRODUCT MANUAL

Duet 3 Zone DMX & Wireless RGB-W Controller



Toll Free: 866.592.3873
Email: sales@solidapollo.com
www.SolidApollo.com

Operating the Duet 3 Zone Controller

This section will show you how to use your new Duet 3 Zone Controller. **Note:** The buttons are highlighted with a color matching the description color.



1 To turn the lights on or off, push the center on/off button once and the lights will gently on or off.

2 Color Wheel: Touch any color on the color wheel to select the light color.

3 Pure Green, Pure Blue, Pure Red Buttons: Touch one of the three top buttons to select pure green, pure blue, or pure red. When selecting another pure color, first hit the previously selected pure color then select the next pure color (example: if Pure Red was chosen, touch Pure Red again before choosing Pure Blue) otherwise the colors will mix (example: if Pure Red is chosen, then Pure Blue is chosen, the red and blue will mix to turn a shade of Purple).

4 White Button: Touch to turn the separate white color on or off, and hold to increase or decrease brightness.

5 Color Brightness Button ("sun symbol"): Touch this button to change brightness level, from 20% to 100%, may vary depending on lighting fixture.

6 White Colors Button: 3 white colors, touch once to get either warm white, daylight white, or pure white.

7 Play button: includes built in color changing programs. To activate, touch play once to select the first program, then touch again to pause. For the next program, touch the play button again for next the program. To change the speed of the program, hold down the play button, this will increase or decrease the speed. The type of built in programs are listed below:

- | | |
|--------------------------------------|---------------------------------|
| 1) Basic Fade Multi-Color | 5) Fade Off Multi-Color |
| 2) Warm Colors Fade Multi-Color | 6) Fade On Multi-Color |
| 3) Basic Fade Plus White Multi-Color | 7) Flash Pure Colors |
| 4) Quick Switch Multi-Color | 8) Cool Colors Fade Multi-Color |

8 1, 2, and 3 Zone Buttons – use to select one or multiple lighting zones.
To select a zone, touch one of the buttons labelled 1, 2 or 3. This button will select the zone for changing the lights, then select other buttons on the controller to change the lights. If 1, 2 or 3 are held down for more than 4 seconds, the lights will either turn off or turn on. To select multiple zones, touch the zone buttons quickly (1, 2 and/or 3) to select the lights you want to change.

PRODUCT MANUAL

Duet 3 Zone DMX & Wireless RGB-W Controller



Toll Free: 866.592.3873
Email: sales@solidapollo.com
www.SolidApollo.com

Troubleshooting

This section will show you how to troubleshoot the Duet 3 Zone Controller.

- 1 If you are having problems with the lights responding to the Duet 3 Zone Controller, first turn off the power to the lights and the controller. Make sure the wires are securely connected and are connected in the correct order. If they are not secure or not correctly connected, review the previous sections matching your controller setup for correct installation procedure.
- 2 If using the RGB-W wireless option, check that the Duet 3 Zone Controller is within range of the receiver (50 feet maximum).
- 3 If there is power going to the controller (and optional receiver if used) and the lights do not shine when turned off and on, the Duet 3 Zone Controller could be dimming the lights. Press and hold the brightness button until the lights brighten, then let go of the button when the lights have reached the desired level of brightness.
- 4 If using a receiver and the lights are on (and within range for wireless control), the Duet 3 Zone Controller may need to be re-paired with the matching receiver. If using the RGB-W Wireless option, follow the next steps. If using the 4 channel DMX to RGB-W receiver, please refer to the user manual titled "4 Channel DMX to RGB-W LED Controller Manual" located on the web site for re-pairing the 4 channel receiver.
 - A On the receiver, hold the Learning Key button down for 10 seconds. This will reset the system to its default setting.
 - B Push the Learning Key button once, then touch the color wheel until the lights blink. This should happen within the first five seconds and will indicate that the Duet 3 Zone Controller is paired with the receiver.

Technical Information

Duet 3 Zone Controller

- Control of DMX lighting fixtures, Wireless Control of RGB-W lighting fixtures, or Both Simultaneously
- DMX 512 Compatible
- 4 Channel RGB Control
- Input 12V - 24V DC
- Maximum Power : 480W@24V DC