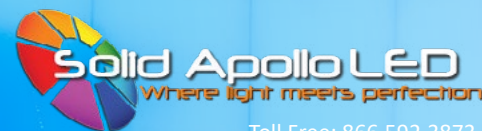


PRODUCT MANUAL

Chroma Flow PRO RGB LED Controller and Receiver



Toll Free: 866.592.3873
Email: sales@solidapollo.com
www.SolidApollo.com

Product Description

The next generation of color changing Chroma Flow LED controllers is here with the new and even more advanced Chroma Flow PRO. The Chroma Flow PRO is a hand-held wireless remote control ready to take control of any color changing LED lighting installation by providing immediate color selection, and even the ability to fine tune any color for your exact specification. Over 16,000 colors are possible and is perfect for color changing RGB LED Strip Lights, RGB LED Outdoor Lights, and any low voltage (12V - 24V) 3 Channel RGB LED Lighting Fixture. The Chroma Flow PRO can also handle a large number of color changing lights as the maximum wattage allowed for 24V DC is 360W, and for 12V DC the maximum is 180W.

Main Functions:

- ON/OFF Button
- Color Wheel
- Individual Red, Green and Blue Increase and Decrease
- 3 White Colors (Warm White, Daylight White and Pure White)
- Brightness Control
- Play and Pause Color Changing Programs
- Memory Function Remembers Last Color and Brightness Level

**Please Note: Do not exceed the Max Wattage ratings:
360W@24V DC, 180W@12V DC**

This manual reviews:

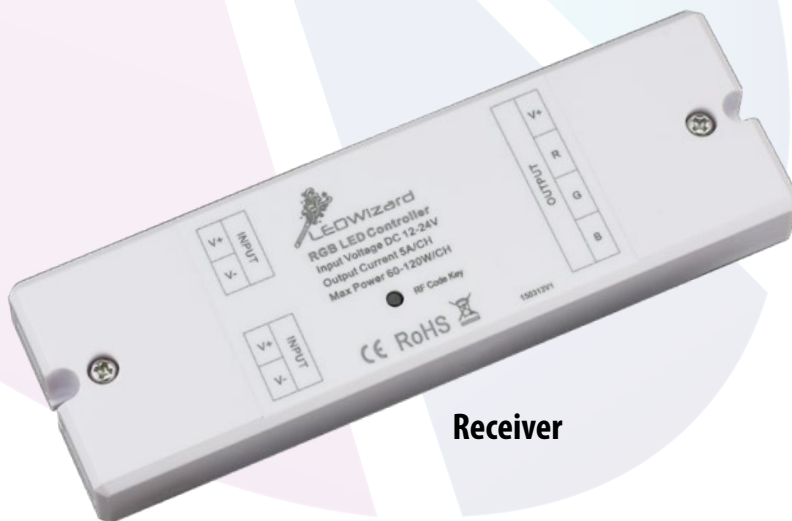
- Entire installation process
- Product features and primary uses
- Detailed functionality
- Troubleshooting options
- Technical Parameters



Chroma Flow PRO and Receiver
SKU: SA-CTRL-CHROMA-PRO-RGB



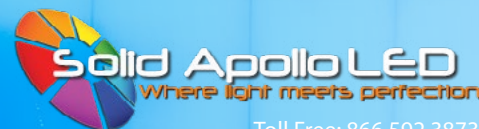
Remote Control



Receiver

PRODUCT MANUAL

Chroma Flow PRO RGB LED Controller and Receiver



Toll Free: 866.592.3873
Email: sales@solidapollo.com
www.SolidApollo.com

Installation

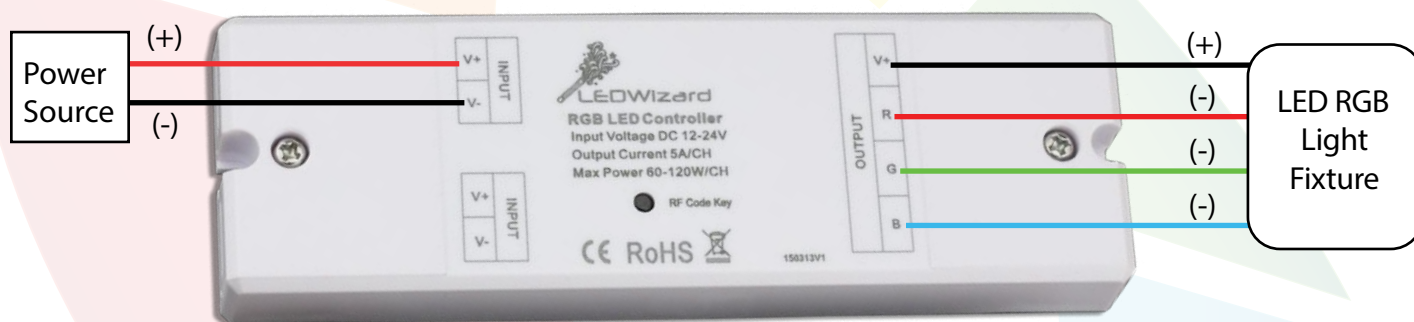
The Chroma Flow PRO remote control and receiver can control any 3 channel RGB LED lighting fixture running from 12V to 24V DC. After the installation is complete, you can select and fine tune colors, change brightness levels or play one of 10 color changing LED programs.

Tools Required:

3 AAA Batteries for Remote Control
Phillips Screwdriver
Flat Head Screwdriver
Wire Stripper

Setting up the controller system:

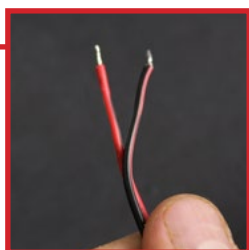
This section will show you how to complete the wiring with the receiver.



- 1 Remove the white plastic end caps on both ends of the receiver using the Phillips screwdriver. This will expose the green wiring slot blocks.



- 2 To add power to the receiver, first make sure the power supply uses the correct voltage (12-24V DC). Then make sure the power supply is not plugged in. Take the negative wire coming from the power supply, and using the Wire Stripper, strip off approximately 1/4" of cover from the end of the wire. Twist the exposed metal wire to help make a secure connection.



...continued on next page

PRODUCT MANUAL

Chroma Flow PRO RGB LED Controller and Receiver

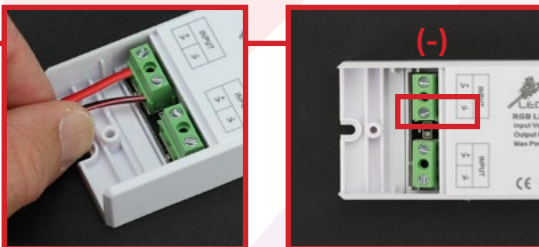
- 3 On the left green wiring slot block for the power supply, use the Phillips Screwdriver to rotate the positive wiring screw counter clockwise to open the wiring slot located below the screw. The screw will not come out.



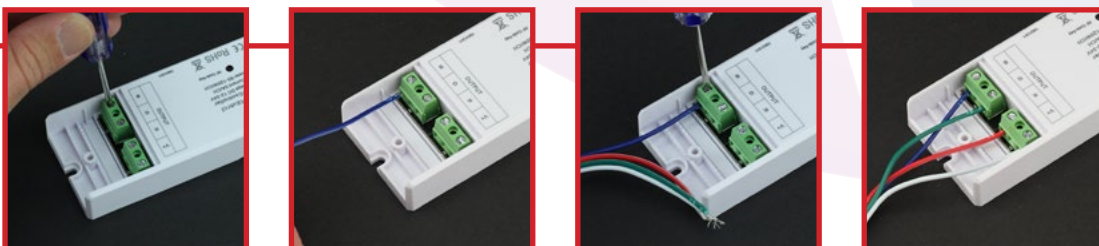
- 4 Take the positive wire and insert the exposed metal end into the positive wiring slot located below the screw. Place the wire inside until the wire stops against the wall inside the positive wiring slot. Take the Phillips Screwdriver and turn the positive wiring screw clockwise until the screw is snug. The positive wire has now been secured to the receiver and should not come out. If it does come out, repeat from step two, and place the exposed metal wire further into the positive wiring slot.



- 5 Repeat steps two through four for the negative wire from the power supply. The negative wire will go into the negative wiring slot.



- 6 On the right side of the receiver, connect the LED fixture, being careful to match the correct color wires with the matching ports. Connect the positive wire and three other negative red, green and blue wires as noted on the wiring diagram on page 4. **Please Note: Do not exceed the Max Wattage ratings: 360W@24V DC, 180W@12V DC**



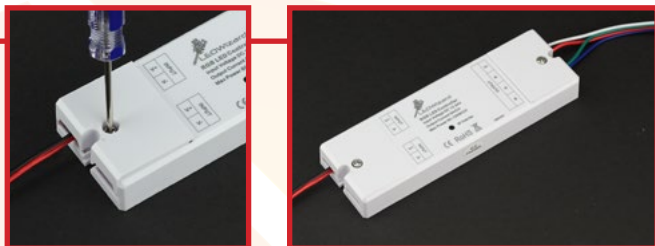
PRODUCT MANUAL

Chroma Flow PRO RGB LED Controller and Receiver



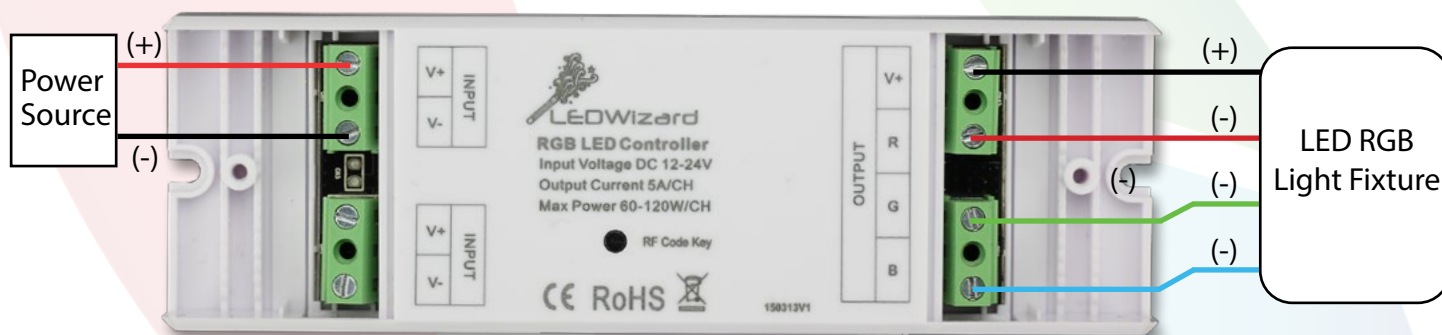
Toll Free: 866.592.3873
Email: sales@solidapollo.com
www.SolidApollo.com

- 7 The wiring for the receiver is now complete. Place the white receiver end caps back on the receiver and screw them down securely using the Phillips Screwdriver.



- 8 Plug in the power supply to the wall outlet. The LED fixture will turn on automatically. The unit is now ready to pair with the Chroma Flow PRO Remote Control.

Receiver Wiring Diagram:



Adding Batteries to Chroma Flow PRO:

This section will show you how to install the batteries in your new Chroma Flow PRO Remote Control.

- 1 On the backside of the controller, open the battery cover door located at the bottom of the controller. The Chroma Flow PRO includes a battery and uses 3 AAA Batteries to operate. When replacing, make sure the polarity is correctly oriented and matches the positive (+) and negative (-) symbols printed inside the battery area.

PRODUCT MANUAL

Chroma Flow PRO RGB LED Controller and Receiver



Toll Free: 866.592.3873
Email: sales@solidapollo.com
www.SolidApollo.com

Pairing the Chroma Flow PRO with the receiver:

This section will show you how to pair your new Chroma Flow PRO with the receiver.

Learning Key Button Location



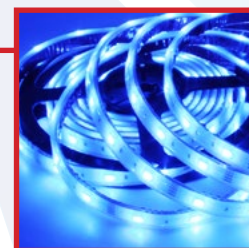
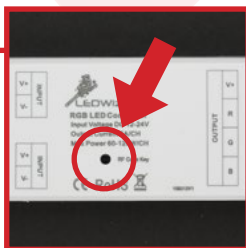
1

To pair the Chroma Flow PRO with the matching receiver, first make sure the receiver is connected and has power running to it and that the lights are connected to the receiver and turned on.



2

On the receiver, tap the learning key button once. Then on the controller, quickly scroll your thumb around the color wheel until the lights begin changing color.



PRODUCT MANUAL

Chroma Flow PRO RGB LED Controller and Receiver



Toll Free: 866.592.3873
Email: sales@solidapollo.com
www.SolidApollo.com

Operating the remote control:

This section will show you how to operate the Chroma Flow PRO remote control.



- A** Press the ON/OFF button to turn the lights on or off.
- B** Press the 3 White Colors Selection button to choose 1 of 3 White Colors: Warm White, Daylight White or Pure White.
- C** Touch the Color Wheel to immediately select a specific color on the color wheel.
- D** Press the Increase Red button to increase the amount of red color being shown.
- E** Press the Decrease Red button to decrease the amount of red color being shown.
- F** Press the Increase Green button to increase the amount of green color being shown.
- G** Press the Decrease Green button to decrease the amount of green color being shown.
- H** Press the Increase Blue button to increase the amount of blue color being shown.
- I** Press the Decrease Blue button to decrease the amount of blue color being shown.
- J** Press and hold the Change Brightness Levels button to increase or decrease the brightness level while the lights are on.
- K** Press the Play or Pause Program button to play a color changing program or pause the current program being played.

PRODUCT MANUAL

Chroma Flow PRO RGB LED Controller and Receiver

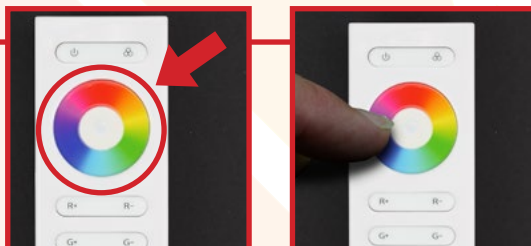


Toll Free: 866.592.3873
Email: sales@solidapollo.com
www.SolidApollo.com

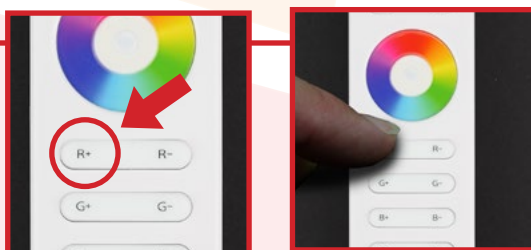
Precisely choosing Static Colors:

This section will show you how to add red, green or blue individually to fine tune any color.

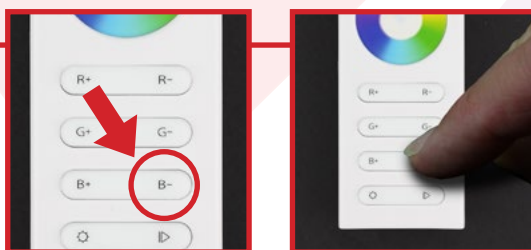
- 1 First select a color on the color wheel.



- 2 Press one of the increase color buttons to add color. For Example, to add more red color, press the Increase Red Color button.



- 3 Press one of the decrease color buttons to decrease the amount of color. For Example, to decrease the amount of blue color, press the Decrease Blue Color button.



PRODUCT MANUAL

Chroma Flow PRO RGB LED Controller and Receiver



Toll Free: 866.592.3873
Email: sales@solidapollo.com
www.SolidApollo.com

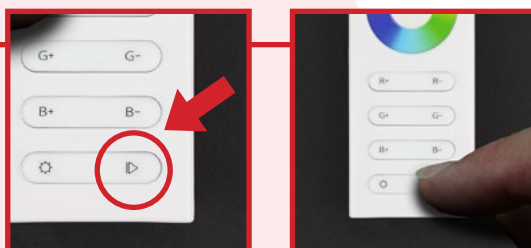
Selecting Color Changing Programs:

This section will show you how to play, pause and select from 1 of 10 programs included. Below is the list of programs.

1. Fade Using All Colors
2. Dynamic Fade With 3 White Colors (Warm White, Daylight White and Pure White)
3. Slow Fade Using All Colors
4. Slow Jump Using All Colors
5. Slow Fade Using Red-Green-Blue
6. Fade Off Instant On Using All Colors
7. Fade Off Instant On Using Red-Green-Blue
8. Fade Off Fade On Using All Colors
9. Slow Off Slow On Using All Colors
10. Jump Using Red-Green-Blue

1

Press the Play or Pause Button Once to start a color changing program. To pause the program, press the Play or Pause button once. To select the next color changing program, press the Play or Pause button again. To select the next program without pausing, slowly press the Play or Pause button twice.



If you have any further questions, please contact us by phone or email using the contact information at the top right of this page.

PRODUCT MANUAL

Chroma Flow PRO RGB LED Controller and Receiver



Toll Free: 866.592.3873
Email: sales@solidapollo.com
www.SolidApollo.com

Troubleshooting

This section will show you how to troubleshoot the Chroma Flow PRO Remote Control and Receiver.

- 1 If you are having problems with the lights responding to the Chroma Flow PRO, first check that the remote control is within range of the receiver (50 feet maximum).
- 2 Check that the lights in the zone are on, and the wiring to and from the receiver matches the diagram on page 4.
- 3 If there is power going to the receiver and the lights do not shine when turned off and on, the Chroma Flow PRO could be dimming the lights in that zone. Select the Zone on the remote, then press and hold the Change Brightness Levels button then let go of the button when the lights have reached the desired level of brightness.
- 4 If the lights are still not responding, you can re-pair the receiver to the remote control following the steps on page 5.
- 5 If the lights are still not responding, replace the three AAA batteries in the back of the remote control.

Technical Information

Controller

- 50 ft wireless range
- Includes one 12V Battery

Receiver

- Input Voltage: 12V - 24V
- Max Power: 180W (12V) / 360W (24V)
- 5A per channel (60W (12V) / 120W (24V) per channel)
- Memory Function when Power Off
- Size: 4.72" x 1.91" x 0.75"

If you have any further questions, please contact us by phone or email using the contact information at the top right of this page.