

### Product Description

---

Thank you for purchasing Solid Apollo's T30 Suspension Kit!

Solid Apollo's T30 Suspension Kit is designed to easily hang T30 aluminum profiles for a functional and attractive LED fixture. Install the perfect task light above work stations, line an architectural feature, or create gorgeous floating accents.

Each section of up to 78" should be secured with two sets of mounting hardware. Our pendant cable is made from durable, twisted stainless steel and securely attaches to the T30 channel with the included slide-in hardware and attaches to the ceiling with included drywall anchors which are conveniently hidden with screw-down flush mount hardware.

This user guide is intended to instruct and guide any user on how to properly prepare the T30 channel, install the hardware, and mount.



**T30 Suspension Kit**

### Product Features

- Fits T30 Profiles
- Made of High Strength Steel
- Suspend LED Fixture for a Professional and Functional Set Up
- Easily Mount to a Variety of Surfaces
- Includes Two Sets of Pendant Cables, Screw Sets, and Wall Anchors

### Manual Will Review

- Preparing Channel
- Installing Hardware
- Mounting Hardware

### Preparation and Installation

---

This section will guide you on how to prepare the T30 channel, add a wired LED strip, and install the mounting hardware to create a finished hanging LED fixture.

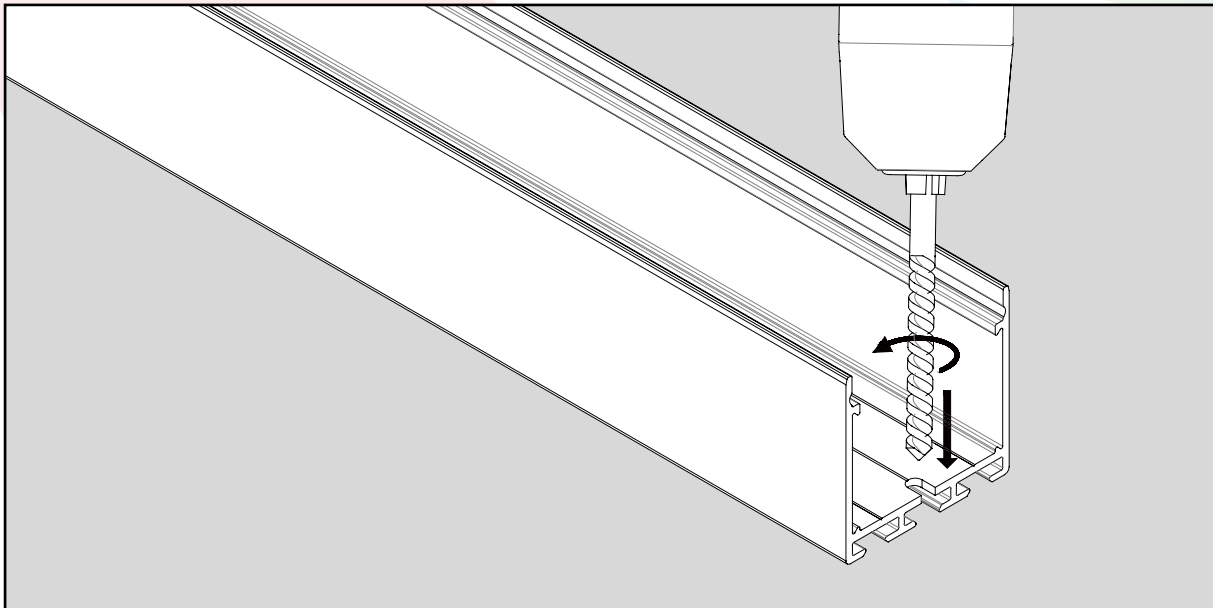
#### Tools & Accessories Required

- T30 Aluminum LED Strip Channel
- Prepared LED Strip
- T30 Diffuser
- T30 Endcaps
- T30 Suspension Kit
- Drill
- Phillips Screwdriver
- Wire Cutters

---

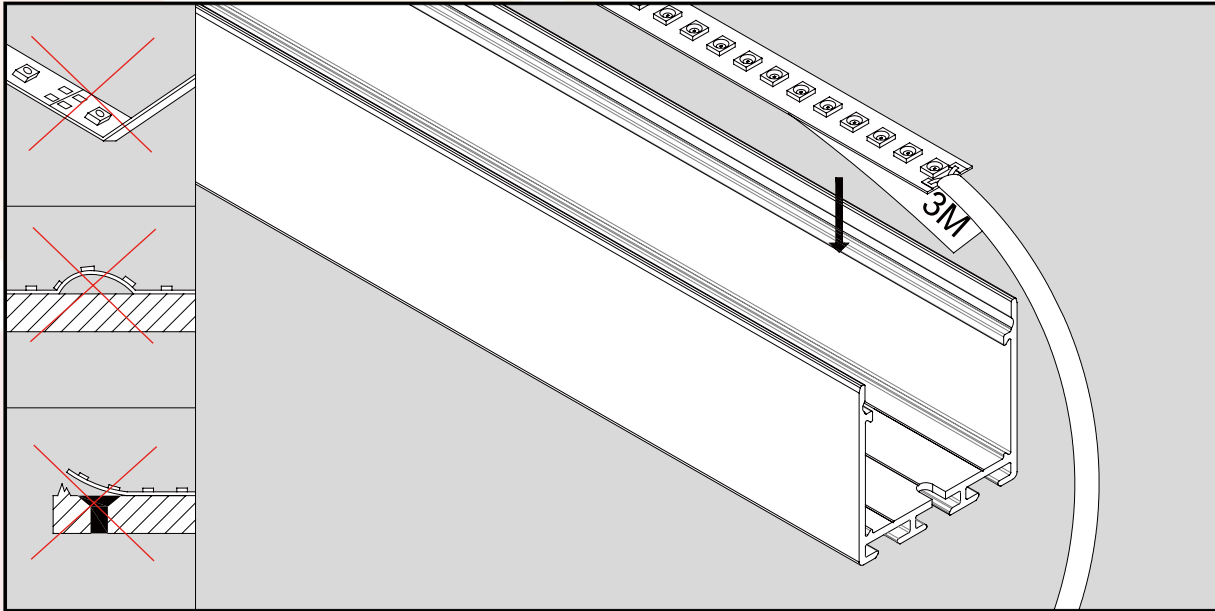
#### Step 1: Create a Notch for Wiring

Using a drill, make a notch in the center of the bottom edge of the T30 channel. Use a drill bit that's slightly larger than the wire used to power the LED strip to ensure a good fit.



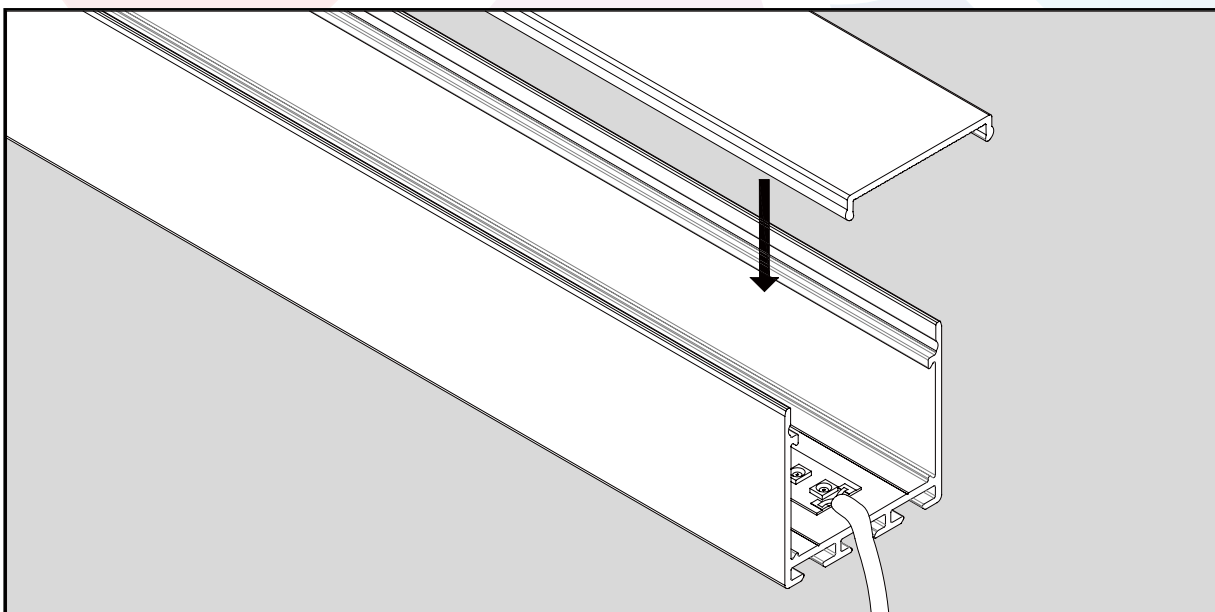
### Step 2: Install LED Strip

Peel the 3M backing from the mounting tape of the back of the LED strip. Place the strip inside of the T30 channel so the wire fits snugly in the notch created in Step 1. Take care to not crease, twist, leave gaps under, or install the LED strip over obstructions. Damage to materials caused during installation is not covered by warranty.



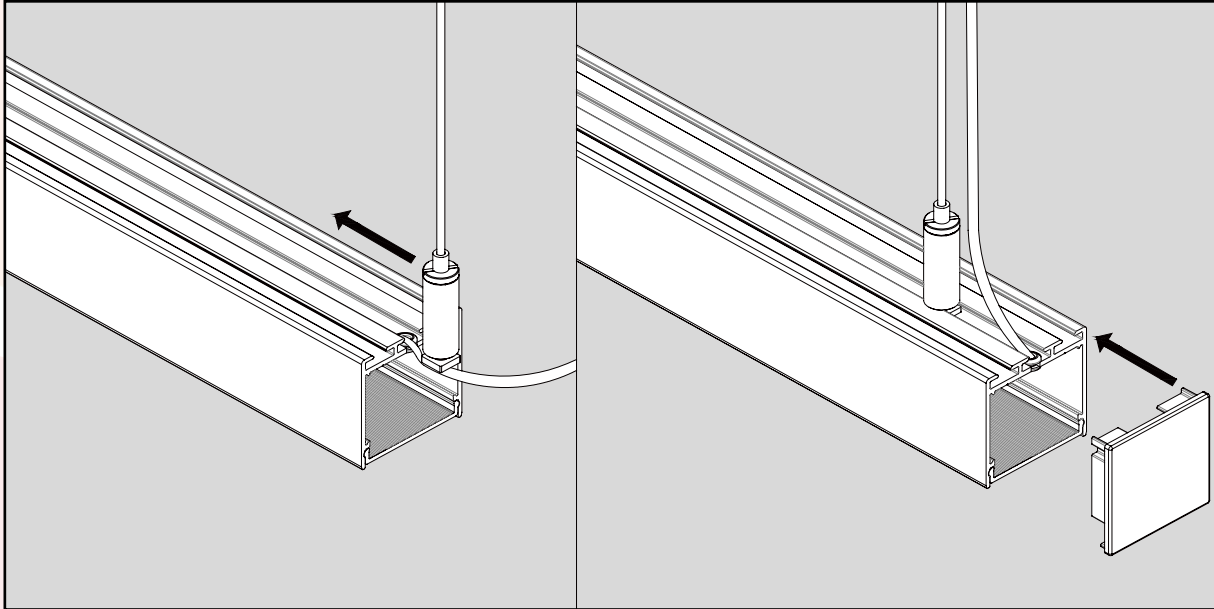
### Step 3: Install Channel Cover

Firmly press the channel cover onto the T30 channel making sure the cover is flush with the edges of the channel. You may need to push firmly to fully secure the channel cover.



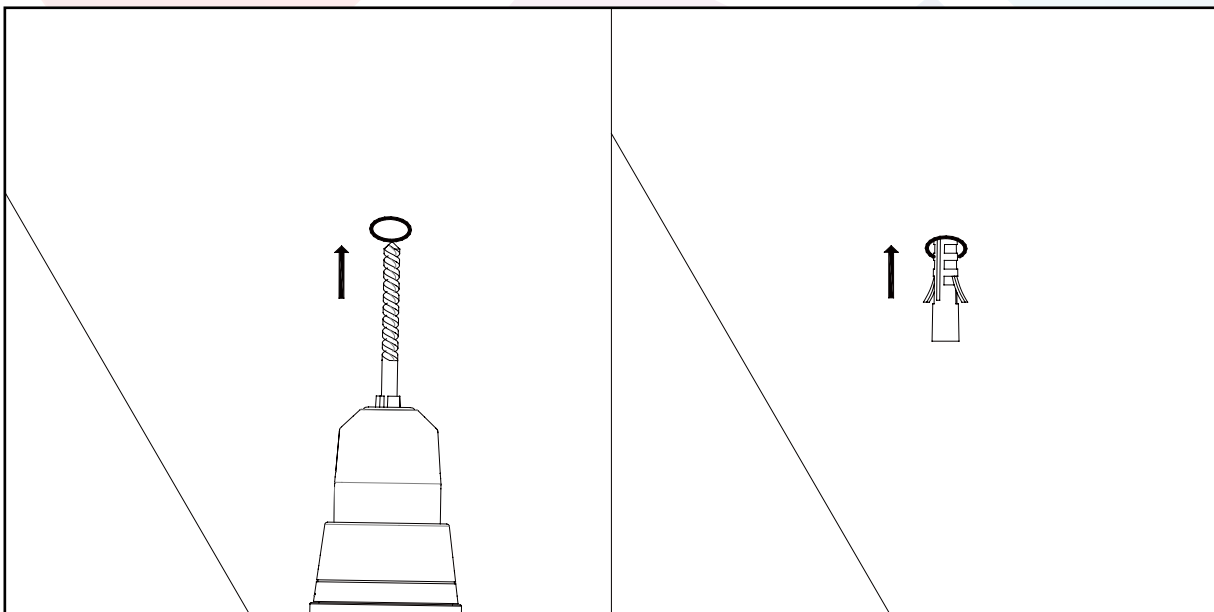
### Step 4: Slide on Pendant Hardware and End Caps

Flip the T30 channel so the bottom is facing up. Insert the square capped screws into the barrel terminals on the pendant cables and tighten until there's just enough space to allow the squared caps to slide under the grooves on the bottom of the channel. Slide the Pendant Cables to the desired location and gently tighten the barrel terminals to secure the pendant. Insert the end caps into the ends of the channel, pressing firmly to ensure a flush fit.



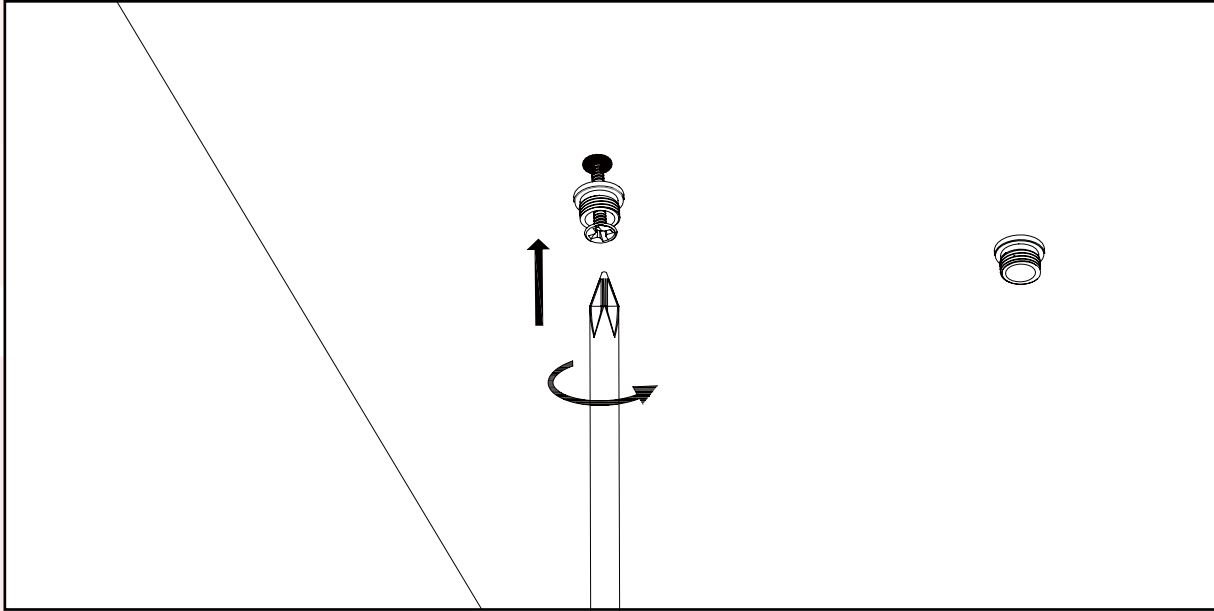
### Step 5: Install Drywall Anchors

Drill pilot holes in your ceiling to accommodate the included wall anchors taking extra care to ensure the distance between the anchors matches the desired distance between the pendants on your channel. Insert the anchors into the drilled holes until the anchor is flush with the ceiling.



### Step 6: Install Ceiling Couplers

Unscrew the ceiling couplers from the pendant cables. Insert the included anchor screws through the ceiling couplers so the screw heads are inside the couplers. Using a phillips head screwdriver, insert the screws and couplers to the drywall anchors installed in Step 5. Tighten the screws until the coupler is firmly flush against the ceiling.



### Step 7: Install Pendant Cables

Supporting the weight of your channel, screw the pendant cables onto the ceiling couplers until a firm connection is secured (**DO NOT** let the weight of the channel hang from a single pendant cable; each section should be supported with two sets of hardware which are meant only to bear the load of one T30 channel up to 78"). Adjust the lengths of the cables by pulling the cable through the barrel terminal or pushing the plunger on top of the barrel terminal to retract the cable. Once the desired length of the cables is achieved, the excess may be trimmed with wire cutters. Complete the project by connecting your LED wire to your controller and/or power supply.

