

Manual Content

- Product Information
- Product Diagram and Parts
- Product Wiring and Installation
- Product Operation
- Product Troubleshooting

Product Description

Solid Apollo's Gecko Four Zone Wireless Wall Dimmer Switch is designed to wirelessly control up to 4 different Zones independently.

With no cables required, this dimmer Switch can conveniently be wall mounted using a double-sided tape (included) or screws (also included). It is fully powered by a 3V DC Battery (included) that can last up to two years.

The Gecko Four Zone Wireless LED Dimmer includes the wall mounting control unit and one zone 8A dimming-receiver that can drive up to 192W at 24V DC.



Product Features

- 1 x Gecko 4-Zone Dimmer
- 1 x 8A Dimming-Receiver
- Control up to 4 zones
- Dimmer can pair to unlimited number of dimming-receivers (one included)
- 65 feet wireless range
- Soft On/Off technology
- Full wireless dimming control
- Easy installation and operation
- No wires, sticks to any flat surface
- Memory Function - Remembers last setting before losing power

Product Specs

Gecko Dimmer

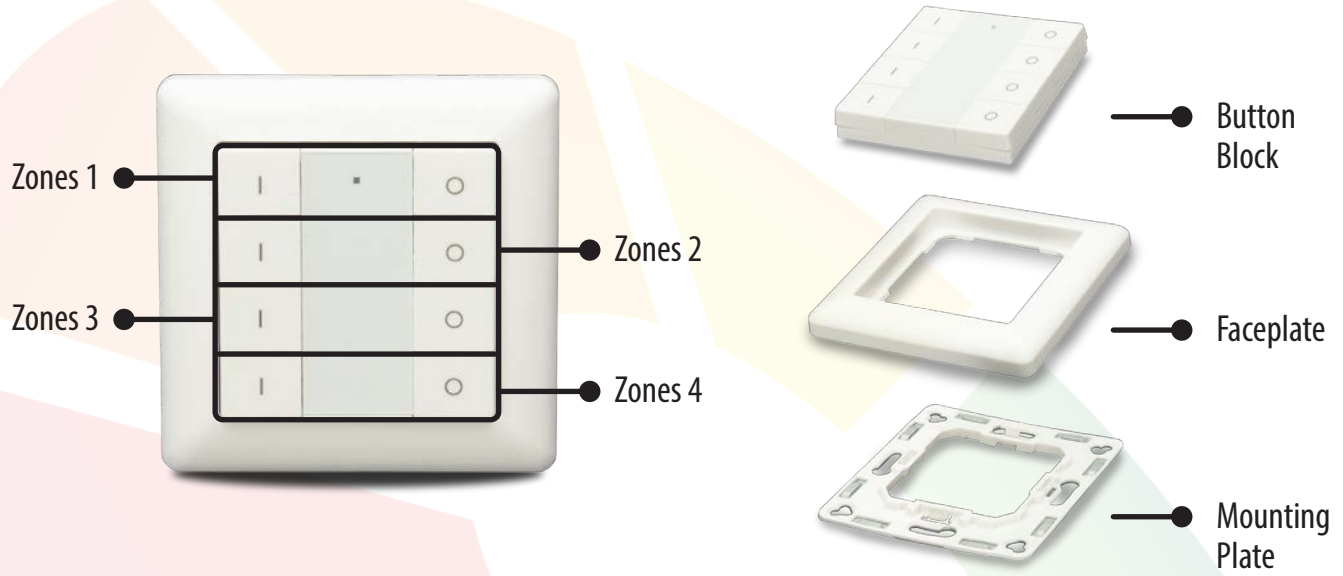
- Dimming : 100% to 1%
- Input Voltage : 3V DC Battery
- Battery Type : CR2430 (included)
- Control System : Radio Frequency
- Frequency : 916.5 MHz
- Range : 65ft
- Dimension : 3" x 3" x 0.59"

Dimming-Receiver

- Input Voltage : 12V - 36V DC
- Max Power : 96W@12V DC
288W@36V DC
- Max Amps : 1 x 8A
- Dimensions : 3.7" x 1.5" x 0.8"
- IP Rating : IP20
- Working Temp : - 4F - 120F
- Warranty : 3 Years
- Certificates : CE, RoHs

Product Diagram and Parts

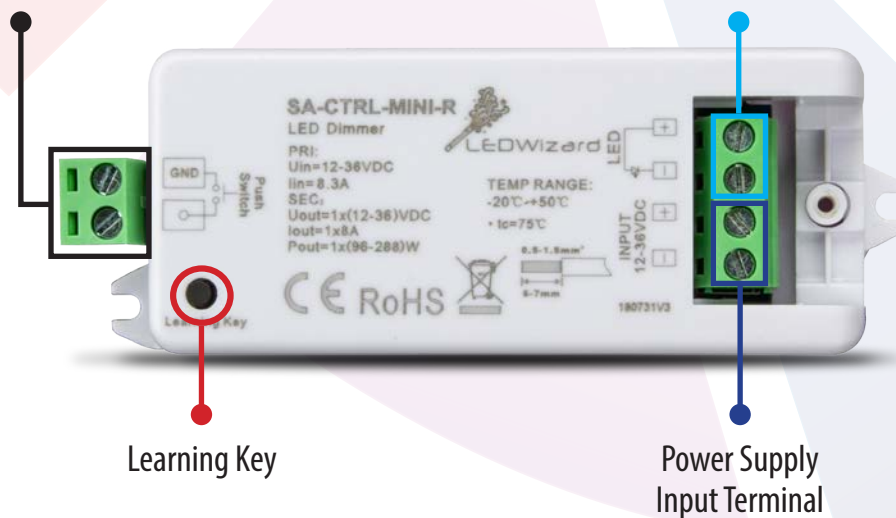
Dimmer



Dimming-Receiver

Optional Push
Switch Terminal

LED Fixture Terminal



Product Wiring and Installation

Wiring of Dimming-Receiver

The tools required for the installation are Philips head screwdriver, slot head screwdriver and wire strippers.

Step 1:

Unscrew and remove the white plastic endcap to expose the green wiring terminal blocks.



Step 2:

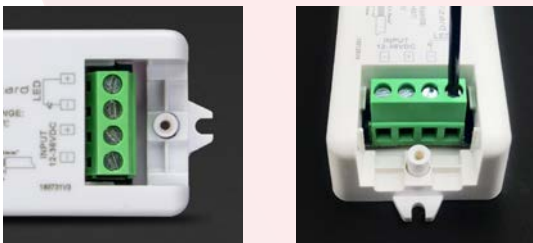
To add power, strip off about ¼-inch of the plastic jacket from the ends of the power supply wires to expose the metal strands. Twist each wire to bind the strands together for a better installation.



Please Note: Make sure that the power supply is NOT connected to a power source.

Step 3:

Open the green terminal-block slots located below the screw, by partially unscrewing the screws on the top.



Step 4:

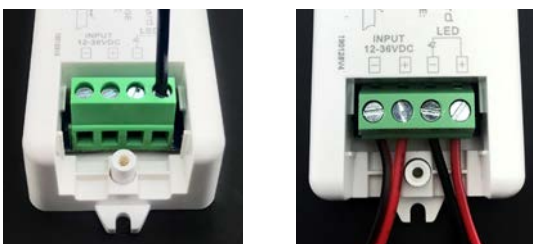
Securely install the stripped Power Supply wires into the opened "INPUT" side of the terminal-block by tightening back the screw. The Red wire should be connected to the "+" slot of the "INPUT" and the Black wire connected to the "-" slot.



Step 5:

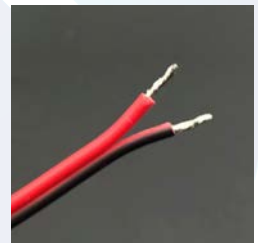
Strip off ¼" of the wires from the LED fixture and connect them to the "LED" side of the terminal-block by similarly following steps 2. and 3.

Lightly pull the wires to test and make sure that they are strongly connected. Place back the end cap removed in step 1. Wiring is complete and you can now power up.



Step 6:

Optional: You can connect a Spring-Loaded Rocker Switch to the Dimming-Receiver to control your LED fixtures with it (on/off and dimming functions). To do this, connect the Spring-Loaded Rocker Switch to the green "Push Switch" terminal-block with the positive wire from the switch connected to the "+" of the "Push Switch" terminal-block, and the negative wire from the switch connected to the "GND" slots.



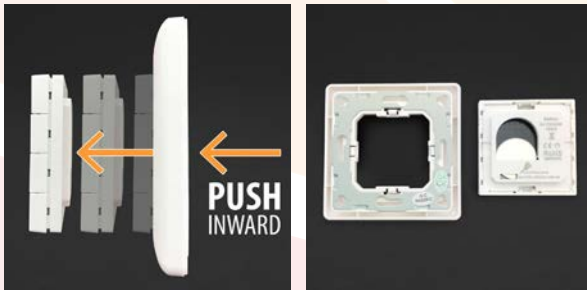
Product Wiring and Installation

Installation & Pairing of Dimmer

Once the wiring of the Dimming-Receiver to a Power Supply and LED Fixture is complete, the only remaining thing is to install the Dimmer and pair it to the Dimming-Receiver.

1. Preparing the dimmer for mounting:

A. Remove the Button-block from the Faceplate assembly by pushing out the middle section from the back.



B. Slide out the battery from the back of the Button-block and remove the plastic piece under it. You might need a small screw driver or stick to push the battery out.



C. Return the battery into its slot and insert the Button-block back into the faceplate.

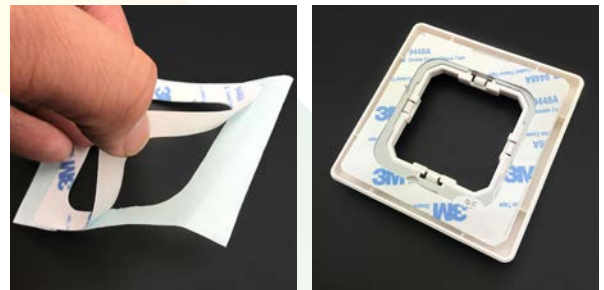
Note: Press any button on the dimmer to see if the small blue indicator LED on the top left corner blinks. If it does, dimmer is ready to be mounted.



2. Mounting the Dimmer:

Option 1: Using the provided double-sided 3M tape

A. Peel off the cover paper on one side of the double-sided 3M tape and stick the 3M tape to the back of the dimmer.



B. Peel off the 3M cover to expose the second sticky side of the double-sided 3M tape and stick the dimmer firmly to the wall.



Product Wiring and Installation (continued)

Option 2: Using the screws

- A. From 1. (C), instead of inserting the Button-block into the Face-plate, leave it aside and separate the Mounting-plate from the Faceplate (See picture below).
- B. Install the mounting-plate to a wall/flat surface using the provided screws (See picture below).
- C. Install back the Faceplate on the secured Mounting-plate and insert the Button-block (See picture below).

A.



B.



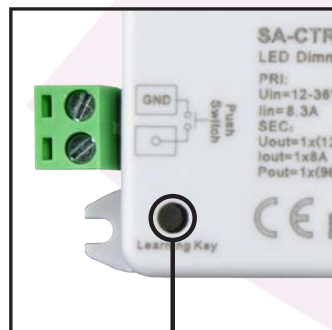
C.



Pairing the Dimmer to the Dimming-Receiver

Once the Dimmer is properly installed and the Dimming-Receiver correctly wired, you can easily pair them as follows:

- A. Push the "**Learning Key**" button on the Dimming-Receiver.
- B. Push and hold the "**I**" button in the zone that you want to assign the Dimming-Receiver. The lights should flash and brighten up once pairing is successful.
- C. Repeat steps A. and B. to pair any other Dimming-Receiver to any desired zone. Multiple Dimming-Receiver can be paired to the same zone using the same process above for each Dimming-Receiver.

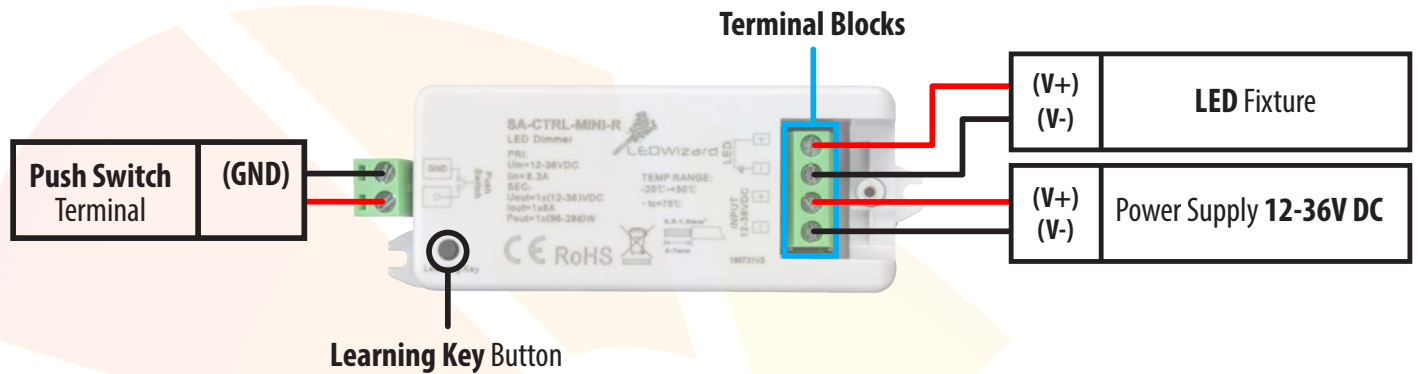


Learning Key Button



"I" Button

Wiring Diagram



Product Operation

Buttons and Functions

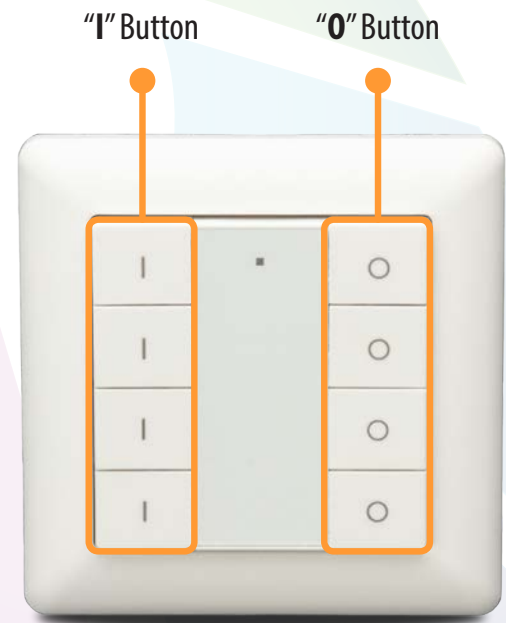
- "1" = Button for turning **ON** and also **brightening up** LED Fixtures.
- "0" = Button for turning **OFF** and also **dimming** LED Fixtures.

Turning On/Off LED Fixtures

- Simple push of "1" button pads will turn **ON** the LED Fixtures in that zone.
- Simple push of "0" button pads will turn **OFF** the LED Fixtures in that zone.

Brightening/Dimming LED Fixtures

- Push and hold of "1" button pads will **brighten up** the LED Fixtures in the corresponding zone.
- Push and hold of "0" button pads will **dim down** the LED Fixtures in the corresponding zone.



Product Troubleshooting

This section will show you how to troubleshoot the Gecko Four Zone Wireless Wall Dimmer Switch.

1. **Dimmer not responding when buttons are pressed:** Check to see that the small plastic piece under the battery has been removed. See *Preparation for mounting in the Installation & Pairing (Pg.4)* section.
2. **Dimmer is working but lights not responding:** If the blue led on the dimmer blinks in response to buttons being pressed that means the dimmer is working but if the lights are not responding accordingly they their must be pairing issues. This may be as a result of one of a few reasons:
 - a. **Dimming-Receiver not powered correctly:** Check to see that the power cable for the “input” are properly wired/connected with red connected to the “+” and black connected to the “-”.
 - b. **LED fixture’s cables not connected correctly:** Check to make sure that the LED fixture’s cables are correctly wired with red connected to the “+” and black connected to the “-” on the “LED” terminal of the dimming-receiver. Ensure that there is strong/tight contact between the wires and terminals.
 - c. **Dimming-Receiver not paired:** Make sure that the dimmer and dimming-receiver are paired for the system to work. See *Pairing the dimmer...* in the Preparation for mounting section (*pg.5*) section.
 - d. **Dimming-Receiver not properly paired:** First, unpair the system by pressing and holding the “Learning Key” on the dimming-receiver for a few seconds until the lights flash. Then re-pair again by following the *Pairing the dimmer...* instructions in the Preparation for mounting section above (*Pg.5*).
 - e. **RF Signal from Dimmer not getting to Dimming-Receiver:** Ensure that the dimming-receiver is within 65 feet range from the dimmer and not fully enclosed in a metal box.
 - f. **Dimmer and Dimming-Receiver paired but lights not responding:** If the lights flash during the pairing process to indicate successful pairing but do not respond thereafter, it may be due to the lights being completely dim. Therefore, press the “Learning Key” once and then press and hold the “1” button on the dimmer until the lights brighten fully. The lights should work perfectly after that.